

WAAS CH 97730 W14A	APP CRS 139°	Rwy Idg TDZE 200 Apt Elev 200
--	------------------------	---

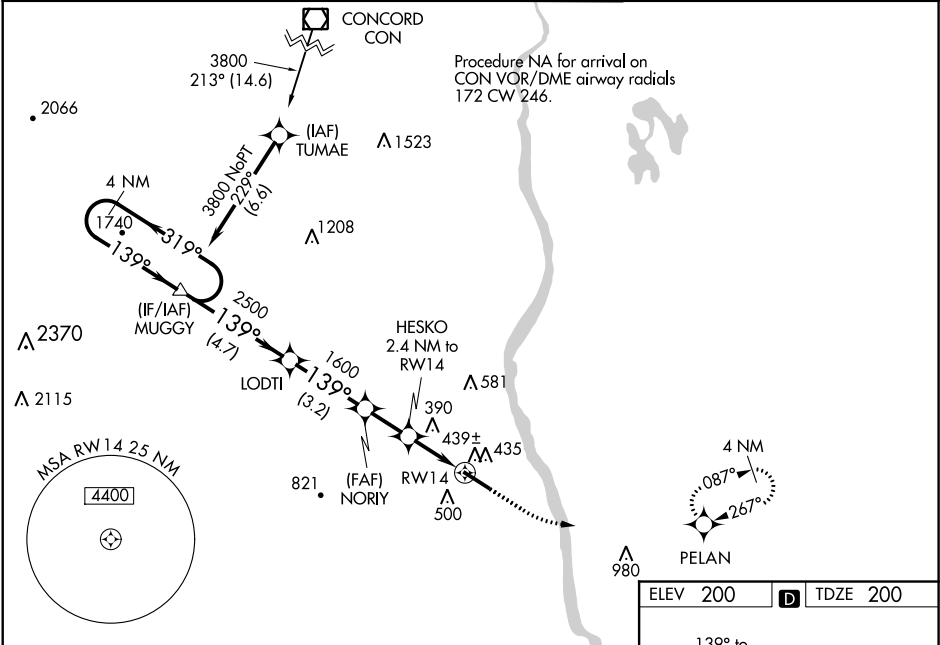
RNAV (GPS) RWY 14
BOIRE FIELD (ASH)

⚠ For uncompensated Baro-VNAV systems, LNAV/VNAV NA below -15°C (5°F) or above 54°C (130°F). DME/DME RNP-0.3 NA. When local altimeter setting not received, use Manchester altimeter setting: increase LPV all Cats DA to 432 feet, LNAV/VNAV all Cats DA to 652 feet and LNAV/VNAV all Cats visibility ½ mile; increase all MDA 40 feet and Circling Cat D visibility ¼ mile. Baro-VNAV and VDP NA when using Manchester altimeter setting. For inop MALSR, increase LNAV/VNAV all Cats and LNAV Cat C/D visibility to 1 ½ mile. For inop MALSR when using Manchester altimeter setting, increase LNAV/VNAV all Cats visibility to 1 ½ mile.

MALSR

MISSED APPROACH:
Climb to 800 then
climbing left turn to
2000 direct PELAN
and hold.

ATIS 125.1	BOSTON APP CON 124.9 269.075	NASHUA TOWER ★ 133.2 (CTAF) 0	GND CON 121.8	CLNC DEL 121.8
----------------------	--	---	-------------------------	--------------------------



4 NM Holding Pattern		MUGGY		LODTI		NORIY		HESKO 2.4 NM to RW14		800		2000		PELAN	
3800 ← 319° 139° →		739°		2500		1600		*1000		*1.4 NM to RW14		RW14		*LNAV only	
GP 3.00° TCH 47				4.7 NM		3.2 NM		1.9 NM		1 NM		1.4			
CATEGORY		A		B		C		D							
LPV DA				400-½		200 (200-½)									
LNAV/ VNAV DA				620-1		420 (500-1)									
LNAV MDA		700-½ 500 (500-½)				700-1 500 (500-1)									
CIRCLING		820-1 620 (700-1)		840-1 640 (700-1)		900-2 700 (700-2)		1000-2½ 800 (800-2½)							

ELEV 200 D TDZE 200

139° to RWY14 248±

6000 X 100

TWR 257

☆ 245

HIRL Rwy 14-32 0

REIL Rwy 32 0

NE-1, 03 DEC 2020 to 31 DEC 2020

NE-1, 03 DEC 2020 to 31 DEC 2020