

VOR/DME LWM	APP CRS	Rwy Idg
112.5	154°	4762
Chan 72		TDZE 107
		Apt Elev 107

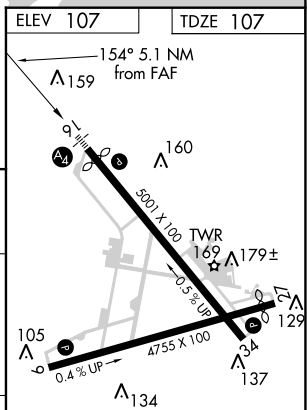
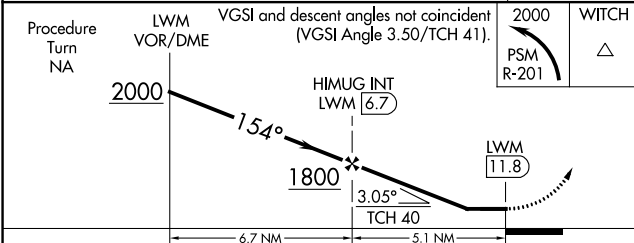
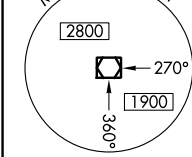
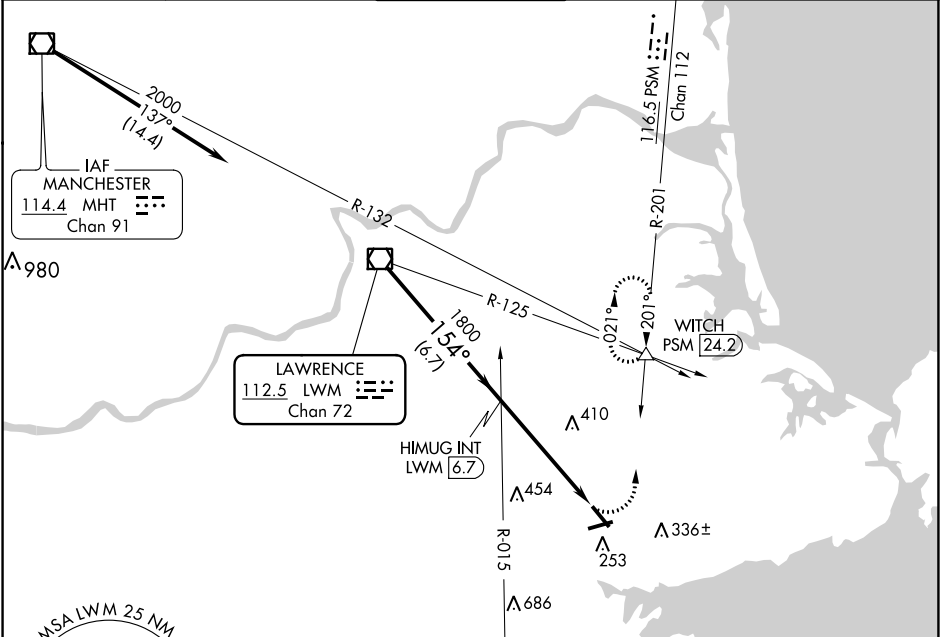
VOR RWY 16
BEVERLY RGNL (BVY)

⚠ Inop table does not apply. When local altimeter setting not received, use Lawrence altimeter setting; increase all MDA 40 feet and Circling visibility Cats C and D 1/4 SM. Circling Rwy 9 NA at night. Rwy 16 helicopter visibility reduction below 3/4 SM NA. Rwy 9 helicopter visibility reduction below 1 SM NA.

MALS
⚠

MISSED APPROACH: Climbing left turn to 2000 via PSM R-201 to WITCH INT/24.2 DME and hold.

ATIS 119.2	BOSTON APP CON 124.4 279.6	BEVERLY TOWER ★ 125.2 (CTAF) 0	GND CON 121.6	UNICOM 122.95
----------------------	--------------------------------------	--	-------------------------	-------------------------



CATEGORY	A	B	C	D
S-16	720-1 613 (700-1)	720-1 613 (700-1)	720-1 613 (700-1)	720-2 613 (700-2)
CIRCLING	720-1 613 (700-1)	820-2 713 (800-2)	880-2 773 (800-2)	

REIL Rwy 34

MIRL Rwy 9-27 and 16-34

FAF to MAP 5.1 NM

Knots	60	90	120	150	180
Min:Sec	5:06	3:24	2:33	2:02	1:42

NE-1, 03 DEC 2020 to 31 DEC 2020

NE-1, 03 DEC 2020 to 31 DEC 2020