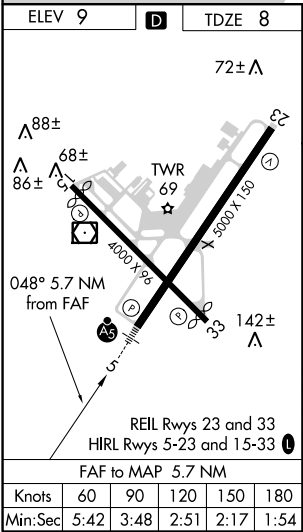
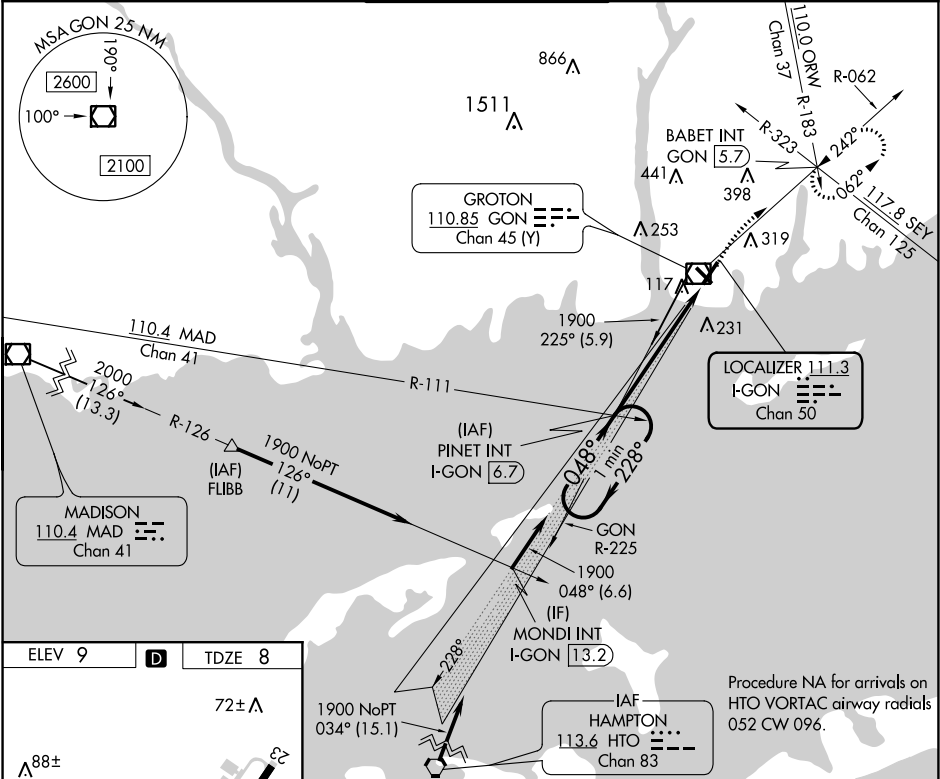


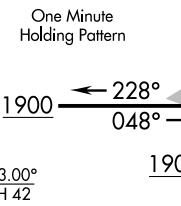
LOC/DME I-GON	APP CRS	Rwy Idg	5000
111.3	048°	TDZE	8
Chan 50		Apt Elev	9

ILS or LOC RWY 5
GROTON-NEW LONDON (GON)

<p>N Night landing: Rwy 15 NA. For inoperative MALSR, increase S-LOC 5 Cat C/D visibility to 1 3/4.</p> <p>A **RVR 1800 authorized with the use of FD or AP or HUD to DA.</p>	<p>MALSR</p> 	<p>MISSED APPROACH: Climbing right turn to 2000 on GON VOR/DME R-062 to BABET INT and hold, continue climb-in-hold to 2000.</p>
---	---	--

ATIS 127.0	PROVIDENCE APP CON * 125.75 319.2	GROTON TOWER * 125.6 (CTAF) 236.775	GND CON 121.65 236.775	CLNC DEL * 119.85
----------------------	---	---	----------------------------------	-----------------------------



<p>One Minute Holding Pattern</p>  <p>GS 3.00° TCH 42</p>				
CATEGORY	A	B	C	D
S-ILS 5	**208/24 200 (200-1/2)			
S-LOC 5	500/24	492 (500-1/2)	500/50	492 (500-1)
CIRCLING	580-1 571 (600-1)	620-1 611 (700-1)	620-1 3/4 611 (700-1 3/4)	620-2 611 (700-2)

NE-1, 03 DEC 2020 to 31 DEC 2020

NE-1, 03 DEC 2020 to 31 DEC 2020