

WAAS CH <b>45521</b> <b>W05A</b>	APP CRS <b>048°</b>	Rwy Idg TDZE Apt Elev	<b>5000</b> <b>8</b> <b>9</b>
--	------------------------	-----------------------------	-------------------------------------

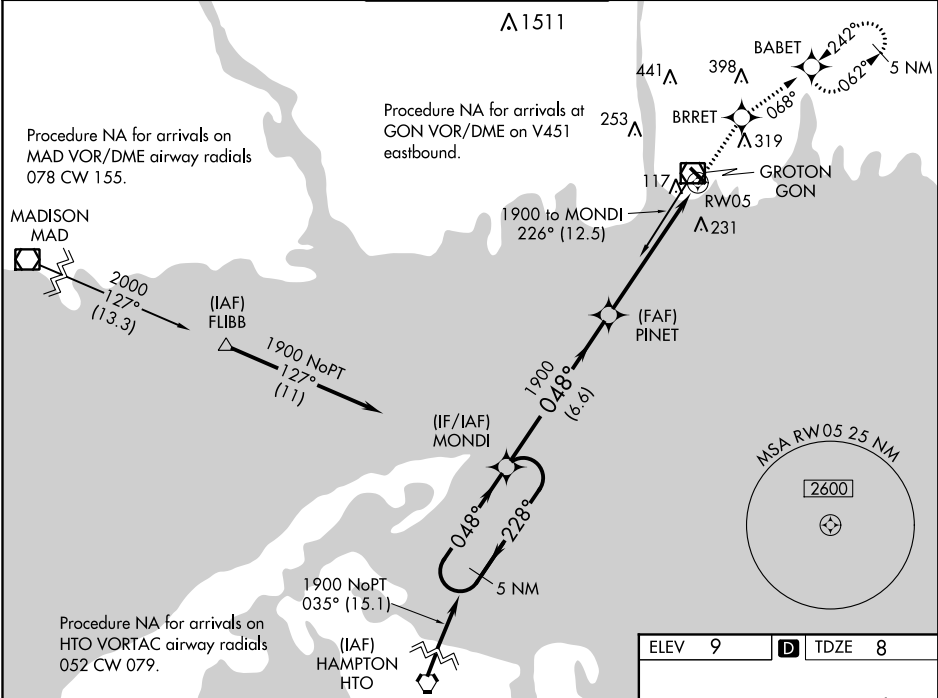
**RNAV (GPS) RWY 5**  
GROTON-NEW LONDON (GON)

**▼** For uncompensated Baro-VNAV systems, LNAV/VNAV NA below -15°C (5°F) or above 54°C (130°F). DME/DME RNP-0.3 NA.  
Night landing: Rwy 15 NA. For inop MALSR, increase LPV all Cats visibility to RVR 5000 and LNAV Cat C/D visibility to 1½.

**MALSR**

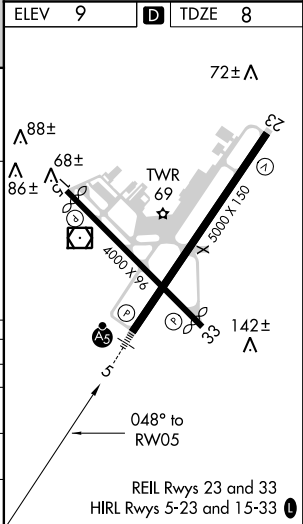
**MISSED APPROACH:** Climb to 2000 direct BRRET and on track 068° to BABET and hold, continue climb-in-hold to 2000.

ATIS <b>127.0</b>	PROVIDENCE APP CON ★ <b>125.75 319.2</b>	GROTON TOWER ★ <b>125.6 (CTAF) 236.775</b>	GND CON <b>121.65 236.775</b>	CLNC DEL ★ <b>119.85</b>
----------------------	---	---	----------------------------------	-----------------------------



**5 NM Holding Pattern**

CATEGORY	A	B	C	D
LPV DA		292/24	284 (300-½)	
LNAV/VNAV DA		533-1⅜	525 (600-1⅝)	
LNAV MDA	500/24	492 (500-½)	500/50	492 (500-1)
CIRCLING	580-1 571 (600-1)	620-1 611 (700-1)	620-1¾ 611 (700-1¾)	620-2 611 (700-2)



NE-1, 03 DEC 2020 to 31 DEC 2020

NE-1, 03 DEC 2020 to 31 DEC 2020