
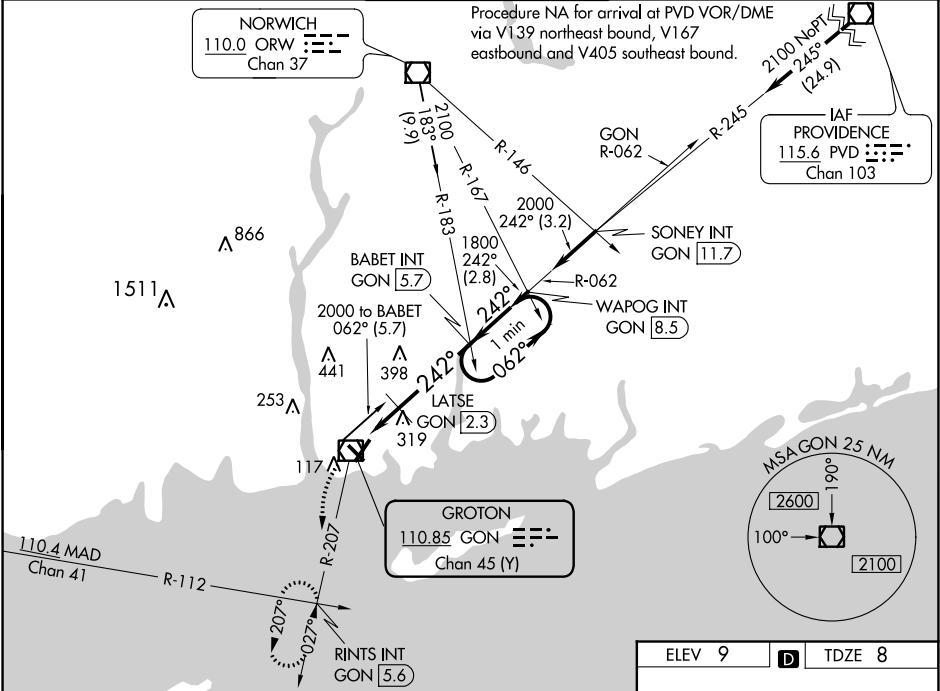


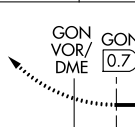
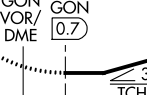
VOR/DME GON	APP CRS	Rwy Idg	5000
110.85	242°	TDZE	8
Chan 45 (Y)		Apt Elev	9

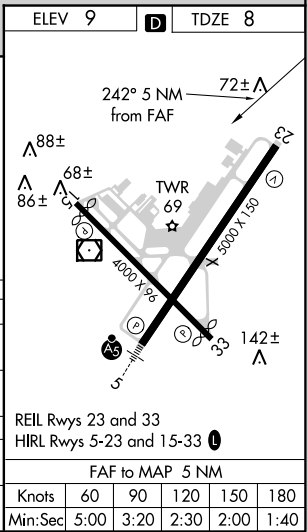
VOR RWY 23
GROTON-NEW LONDON (GON)

 Night landing: Rwy 15 NA. Helicopter visibility reduction below 1 SM NA.	MISSED APPROACH: Climbing left turn to 2000 via GON R-207 to RINTS INT/GON 5.6 DME and hold.
---	--

ATIS 127.0	PROVIDENCE APP CON ★ 125.75 319.2	GROTON TOWER ★ 125.6 (CTAF) 236.775	GND CON 121.65 236.775	CLNC DEL ★ 119.85
---------------	--------------------------------------	--	---------------------------	----------------------



2000 GON R-207	RINTS INT	VGSI and descent angles not coincident (VGSI Angle 3.00/TCH 49).		One Minute Holding Pattern	
		LATSE GON [2.3]	BABET INT GON [5.7]	062° → 2000	
		640	1800	242°	
1.6 NM		3.4 NM			
CATEGORY	A	B	C	D	
S-23	640-1	632 (700-1)	640-1¾ 632 (700-1¾)	640-2 632 (700-2)	
CIRCLING	640-1	631 (700-1)	640-1¾ 631 (700-1¾)	640-2 631 (700-2)	
LATSE FIX MINIMUMS					
S-23	580-1	572 (600-1)	580-1½ 572 (600-1½)	580-1¾ 572 (600-1¾)	
CIRCLING	580-1 571 (600-1)	620-1 611 (700-1)	620-1¾ 611 (700-1¾)	620-2 611 (700-2)	



NE-1, 03 DEC 2020 to 31 DEC 2020

NE-1, 03 DEC 2020 to 31 DEC 2020