

WAAS CH <b>70418</b> <b>W05A</b>	APP CRS <b>047°</b>	Rwy Idg TDZE <b>309</b> Apt Elev <b>333</b>
--	------------------------	---

RNAV (GPS) RWY 5

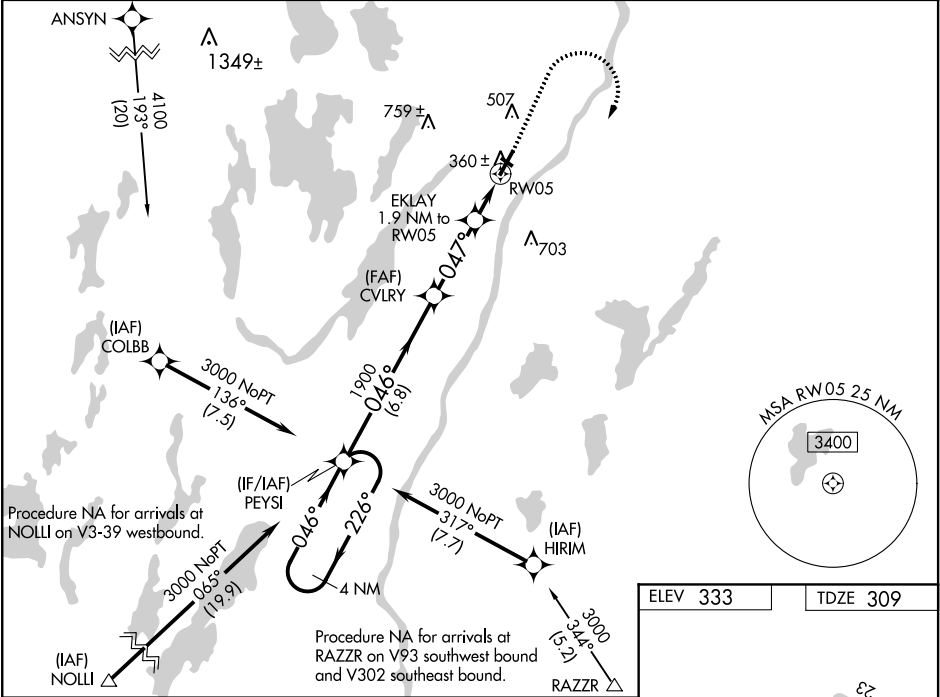
WATERVILLE ROBERT LAFLEUR (WVL)

⚠ Inop table does not apply to LPV. For uncompensated Baro-VNAV systems, LNAV/VNAV NA below -1.5°C (5°F) or above 54°C (130°F). DME/DME RNP-0.3 NA. Helicopter visibility reduction below ¾ SM NA. Baro-VNAV and VDP NA when using Augusta altimeter setting. When local altimeter setting not received, use Augusta altimeter setting and increase all DA 35 feet and all MDA 40 feet, increase visibility LNAV/VNAV all Cats ¾ mile. Night Landing: Rwy 14 NA. For inop MALSF, increase LNAV/VNAV Cat D visibility to 1 mile and LNAV Cats C/D visibility to ¾ mile. For inop MALSF, when using Augusta altimeter setting, increase LPV all Cats visibility to ¾ mile, LNAV/VNAV Cat D visibility to 1 ½ mile, and LNAV Cat D visibility to 1 mile.

MALSF

MISSED APPROACH:  
Climb to 1000 then climbing right turn to 3000 direct PEYSI and hold.

AWOS-3PT <b>118.375</b>	PORTLAND APP CON ★ <b>128.35 299.2</b>	CLNC DEL <b>124.6 299.2</b>	UNICOM <b>122.7 (CTAF) 0</b>
----------------------------	---	--------------------------------	---------------------------------



4 NM Holding Pattern		PEYSI	CVLRY	EKLAY 1.9 NM to RW05	1000	3000	PEYSI
GP 3.00° TCH 48		3000	226°	046°	046°	047°	*LNAV only.
		1900	1900	*920	0.9 NM to RW05		
		6.8 NM	3.1 NM	1 NM	0.9 NM		
CATEGORY	A	B	C	D			
LPV DA		509-¾	200 (200-¾)				
LNAV/VNAV DA		588-¾	279 (300-¾)				
LNAV MDA		620-¾	311 (300-¾)				
CIRCLING	860-1	527 (600-1)	860-1½	900-2			
			527 (600-1½)	567 (600-2)			

