

WAAS CH 99739 W12A	APP CRS 124°	Rwy Idg 3500 TDZE 41 Apt Elev 42
--	------------------------	---

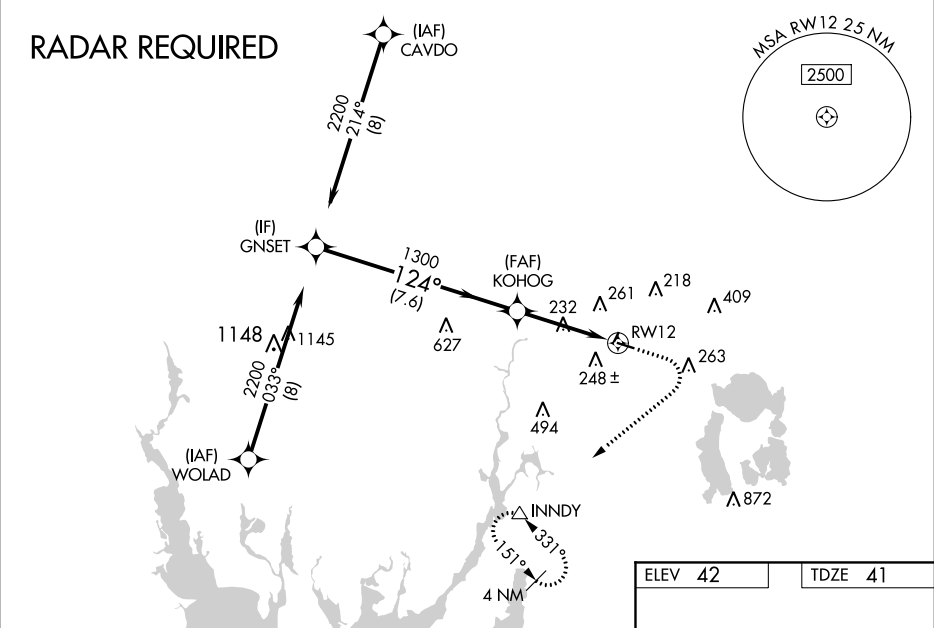
RNAV (GPS) RWY 12

TAUNTON MUNI-KING FIELD (TAN)

⚠ Circling NA to Rwy's 4 and 22. For uncompensated Baro-VNAV systems, LNAV/VNAV NA below -3°C (27°F) or above 54°C (130°F). Baro-VNAV NA when using New Bedford altimeter setting. DME/DME RNP-0.3 NA. Rwy 12 helicopter visibility reduction below ¼ SM NA. When local altimeter setting not received, use New Bedford altimeter setting and increase LPV DA to 425 feet, LNAV/VNAV DA to 448 feet and all MDA 40 feet, increase LPV and LNAV/VNAV visibilities all Cats ½ SM, increase LNAV Cat C/D visibility ⅓ SM, and increase Circling Cat D visibility ¼ SM.

MISSED APPROACH: (Do not exceed 210K until INNDY) Climb to 500 then climbing right turn to 3000 direct INNDY and hold, continue climb in hold to 3000.

ASOS 132.675	PROVIDENCE APP CON★ 128.7 269.525	UNICOM 122.7 (CTAF) 0
------------------------	---	---------------------------------



GNSET		KOHOG		INNDY	
2200		1300		500	
GP 3.00°		124°		3000	
TCH 57		1300		INNDY	
7.6 NM		2.4 NM		* LNAV only	
CATEGORY		A		B	
LPV DA		391-1½		350 (400-1½)	
LNAV/VNAV DA		414-1¼		373 (400-1¼)	
LNAV MDA		540-1 499 (500-1)		540-1¾ 499 (500-1¾)	
CIRCLING		560-1 518 (600-1)		580-1 538 (600-1)	
		660-1¾ 618 (700-1¾)		760-2¼ 718 (800-2¼)	

