

WAAS CH 58139 W30A	APP CRS 304°	Rwy Idg 3500 TDZE 42 Apt Elev 42
--	------------------------	---

RNAV (GPS) RWY 30
TAUNTON MUNI-KING FIELD (TAN)

RNP APCH.

T Circling NA to Rwy 4 and 22. Rwy 30 helicopter visibility reduction below 1 SM NA. For uncompensated Baro-VNAV systems, LNAV/VNAV NA below -23°C or above 46°C.

MISSED APPROACH: (Do not exceed 210K until INNDY) Climb to 600 then climbing left turn to 3000 direct INNDY and hold. Continue climb in hold to 3000.

ASOS 132.675	PROVIDENCE APP CON ★ 128.7 269.525	UNICOM 122.7 (CTAF) 0
------------------------	--	---------------------------------

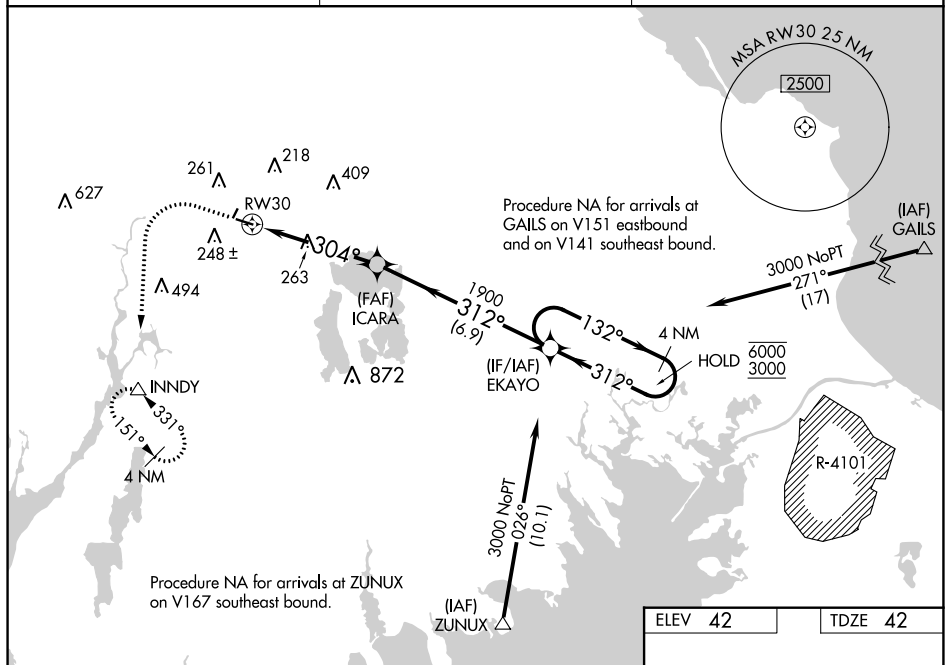


Diagram illustrating a VGS and RNAV glidepath not coincident (VGS Angle 3.60/TCH 45). The path shows a 304° turn, a 312° turn, and a 132° turn, with altitudes of 1900 and 3000 feet. The path is labeled with 'VGS and RNAV glidepath not coincident (VGS Angle 3.60/TCH 45)'. The final segment is labeled '4 NM Holding Pattern'. The diagram also shows a 'GP 3.60° TCH 59°'.

