

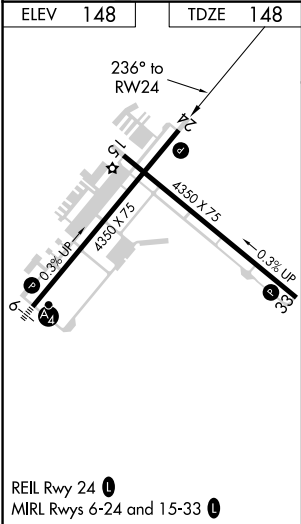
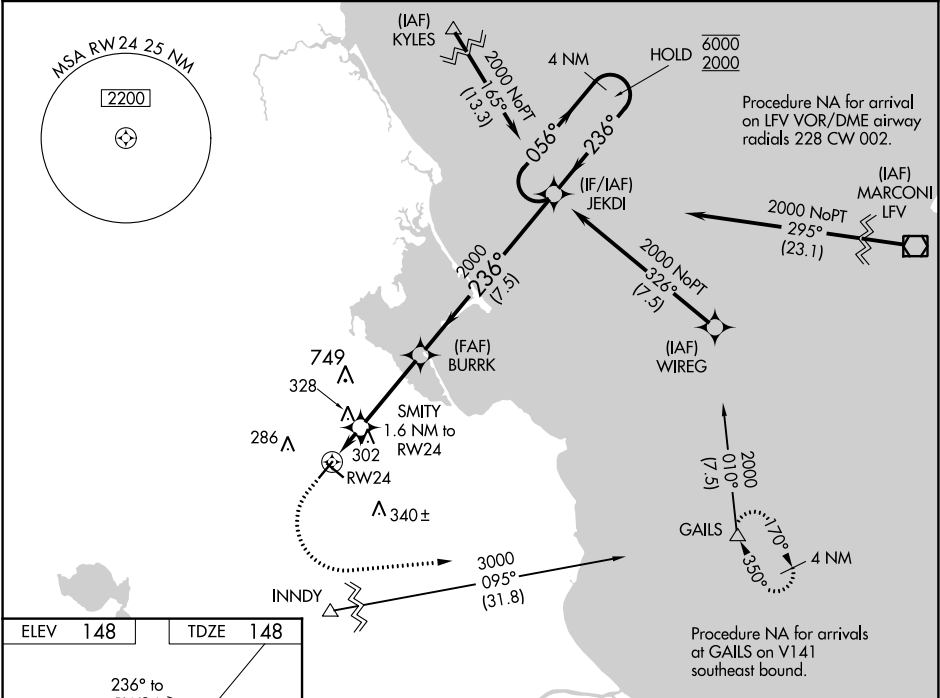
WAAS CH <b>42922</b> <b>W24A</b>	APP CRS <b>236°</b>	Rwy Idg TDZE <b>148</b> Apt Elev <b>148</b>
--	------------------------	---

RNAV (GPS) RWY 24

PLYMOUTH MUNI (PYM)

RNP APCH.	MISSED APPROACH: Climb to 640 then climbing left turn to 2000 direct GAILS and hold.
Circling Rwy 15 NA at night. Rwy 24 helicopter visibility reduction below ¾ SM NA. For uncompensated Baro-VNAV systems, LNAV/VNAV NA below -17°C (2°F) or above 54°C (130°F).	

ASOS <b>135.625</b>	BOSTON APP CON * <b>118.2 284.6</b>	CLNC DEL <b>127.75</b>	UNICOM <b>122.725</b> (CTAF)	<b>122.9 0</b>
------------------------	--	---------------------------	---------------------------------	----------------



640	2000	GAILS	VGSI and RNAV glidepath not coincident (VGSI Angle 4.00/TCH 40).	4 NM Holding Pattern
*LNAV only.				
SMITY 1.6 NM to RW24				
JEKDI 2000				
BURRK 2000				
RW24 780*				
1 NM 0.6 NM 3.4 NM 7.5 NM				
CATEGORY	A	B	C	D
LPV DA	446-1	298 (300-1)		NA
LNAV/VNAV DA	445-1	297 (300-1)		NA
LNAV MDA	580-1	432 (500-1)	580-1¼ 432 (500-1¼)	NA
CIRCLING	620-1 472 (500-1)	640-1 492 (500-1)	740-1½ 592 (600-1½)	NA