

WAAS
CH 86337
W24A

APP CRS
242°

Rwy Idg
TDZE
Apt Elev

3300
9
9

RNAV (GPS) RWY 24

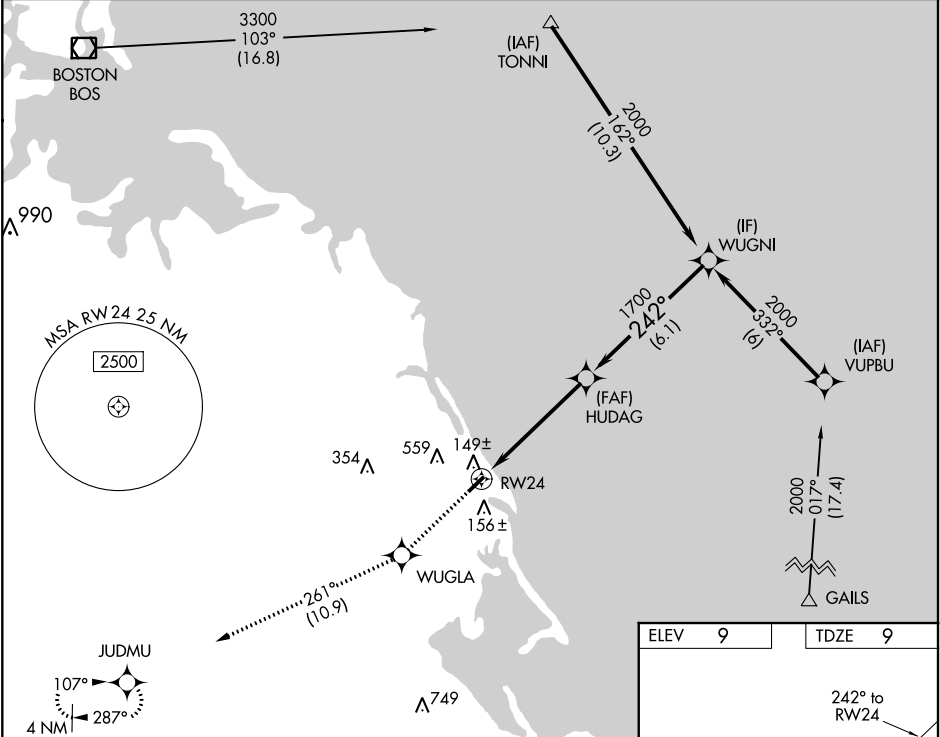
MARSHFIELD MUNI - GEORGE HARLOW FIELD (GHG)

⚠

For uncompensated Baro-VNAV systems, LNAV/VNAV NA below -15°C (5°F) or above 54°C (130°F). DME/DME RNP-0.3 NA. When local altimeter setting not received, use Plymouth altimeter setting and increase all DA 47 feet, and all MDA 60 feet; increase LPV all Cats visibility ¼ mile, increase LNAV/VNAV all Cats visibility ½ mile. Baro VNAV and VDP NA when using Plymouth altimeter setting. Helicopter visibility reduction below ¾ SM NA.

MISSED APPROACH: Climb to 2000 direct WUGLA and on track 261° to JUDMU and hold.

AWOS-3 120.0	BOSTON APP CON 124.1	UNICOM 122.8 (CTAF) 0
-----------------	-------------------------	--------------------------



	2000	WUGLA	JUDMU
	↑	tr 261°	
* LNAV only. * 1.1 NM to RW24			
		HUDAG	WUGNI
		1700	2000
		242°	
		1700	
			GP 3.00° TCH 40
		1.1 NM	4.1 NM
			6.1 NM
CATEGORY	A	B	C
LPV DA	359-1 1/8	350 (400-1 1/8)	NA
LNAV/ VNAV	403-1 3/8	394 (400-1 3/8)	NA
LNAV MDA	400-1	391 (400-1)	NA
CIRCLING	500-1 491 (500-1)	880-1 1/4 871 (900-1 1/4)	NA

