

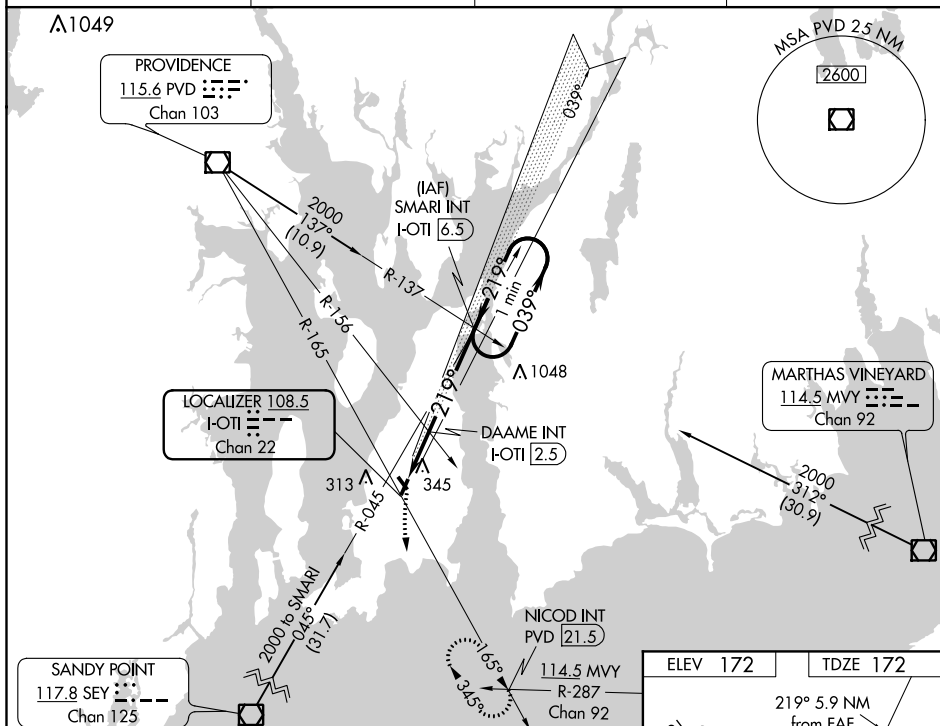
LOC/DME I-OTI <u>108.5</u> Chan <b>22</b>	APP CRS <b>219°</b>	Rwy Idg <b>2999</b> TDZE <b>172</b> Apt Elev <b>172</b>
---	------------------------	---

LOC RWY 22  
NEWPORT STATE (UUU)

<b>T</b>	When local altimeter setting not received, use Providence altimeter setting and increase all MDA 60 feet. Straight-in
<b>A NA</b>	Rwy 22 NA at night, Circling Rwy 4, 22, 34 NA at night.

**MISSED APPROACH:** Climbing left turn to 2100 via PVD VOR/DME R-165 to NICOD INT/21.5 DME and hold.

ASOS <b>132.075</b>	PROVIDENCE APP CON* <b>128.7 269.525</b>	CLINC DEL <b>127.25</b>	UNICOM <b>123.05 (CTAF) L</b>
------------------------	---	----------------------------	----------------------------------



CATEGORY	A	B	C	D
S-22	720-1 548 (600-1)		720-1½ 548 (600-1½)	NA
CIRCLING	760-1 588 (600-1)		760-1½ 588 (600-1½)	NA
DAAME FIX MINIMUMS (DUAL VOR RECEIVERS OR DME REQUIRED)				
S-22	640-1 468 (500-1)		640-1¼ 468 (500-1¼)	NA
CIRCLING	760-1 588 (600-1)		760-1½ 588 (600-1½)	NA

