

APP CRS  
**166°**

Rwy Idg  
TDZE  
Apt Elev

**2623**  
**162**  
**172**

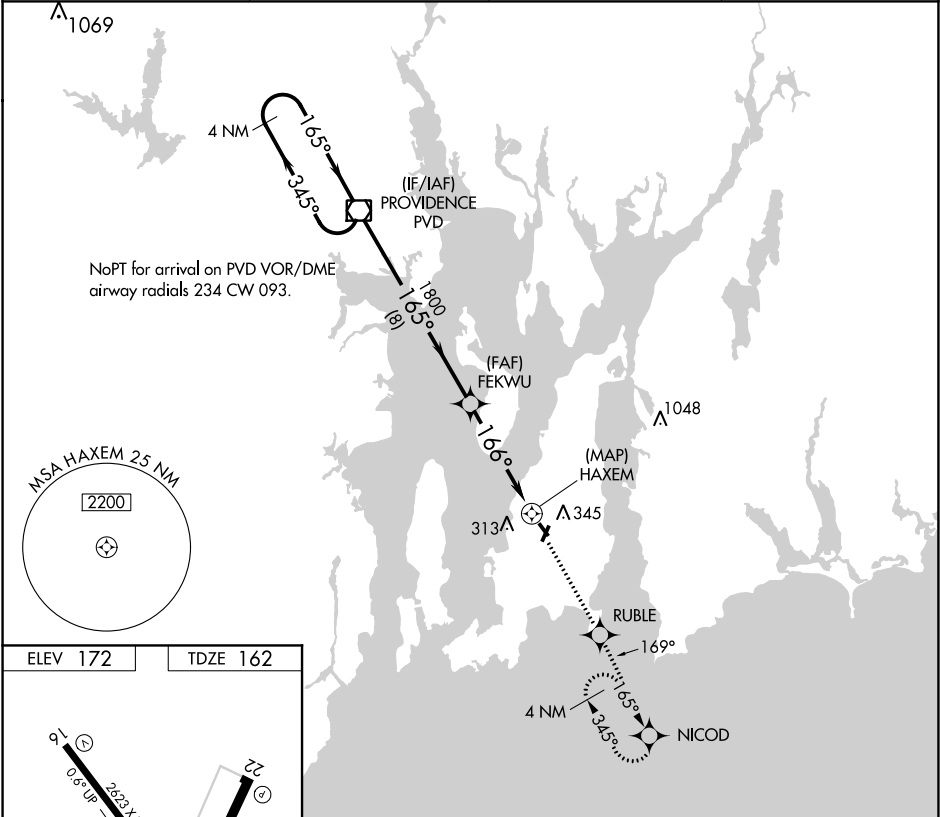
**RNAV (GPS) RWY 16**  
NEWPORT STATE (UUU)

RNP APCH

When local altimeter setting not received, use Providence altimeter setting and increase all MDAs 60 feet. Circling Rwy 4, 22, 34 NA at night. Rwy 16 helicopter visibility reduction below ¾ SM NA.

MISSED APPROACH: Climb to 2100 direct RUBLE and via 169° track to NICOD and hold.

ASOS <b>132.075</b>	PROVIDENCE APP CON★ <b>128.7 269.525</b>	CLNC DEL <b>127.25</b>	UNICOM <b>123.05 (CTAF)</b>
------------------------	---	---------------------------	--------------------------------



4 NM Holding Pattern PVD VOR/DME

2100 RUBLE tr 169° NICOD

3000 ← 345° 165° → 165° FEKWU 1800 3.04° TCH 40 HAXEM

VGSI and descent angles not coincident (VGSI Angle 3.75/TCH 40).

8 NM 4.5 NM 0.5

CATEGORY	A	B	C	D
LNAV MDA	600-1	438 (500-1)	600-1¼ 438 (500-1¼)	NA
CIRCLING	700-1	528 (600-1)	700-1½ 528 (600-1½)	NA

NE-1, 03 DEC 2020 to 31 DEC 2020

NE-1, 03 DEC 2020 to 31 DEC 2020