

LOC/DME I- OX C	APP CRS	Rwy ldg
109.55	005°	5301
Chan 32 (Y)		TDZE 721
		Apt Elev 730

ILS or LOC RWY 36

WATERBURY-OXFORD (OXC)

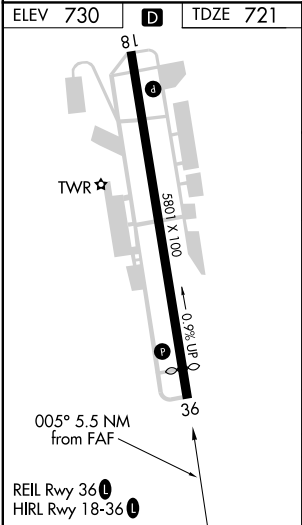
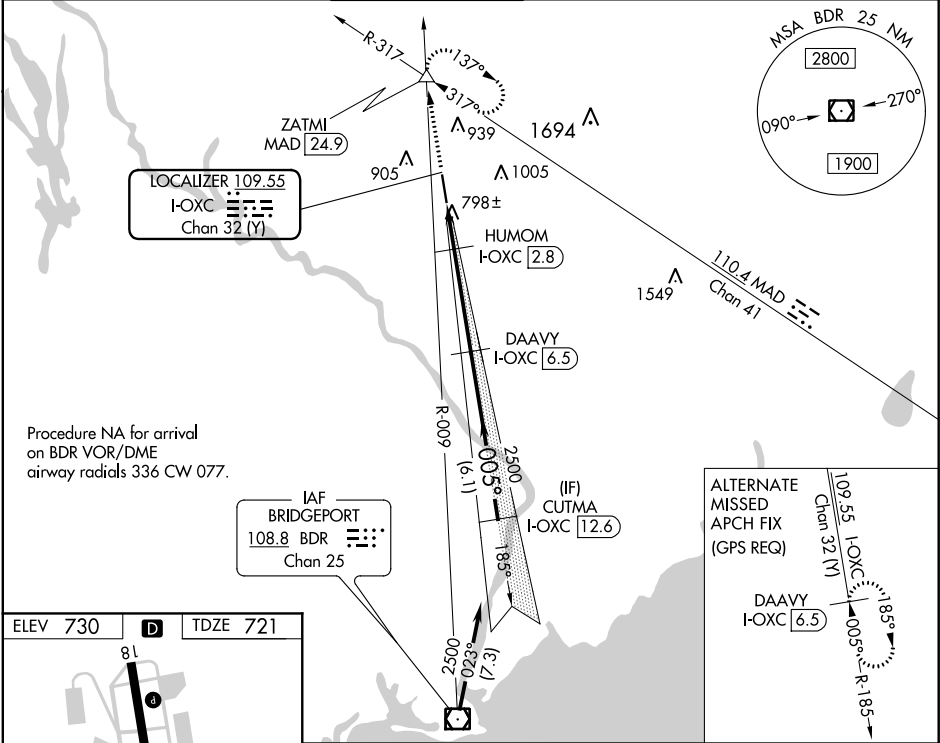
DME required.

NA

Rwy 36 helicopter visibility reduction below ¾ SM NA.

MISSED APPROACH: Climb to 3000 on heading 005° and MAD VOR/DME R-317 to ZATMI INT/MAD 24.9 DME and hold. Continue climb-in-hold to 3000.

ATIS	NEW YORK APP CON	OXFORD TOWER★	GND CON	CLNC DEL	UNICOM
132.975	124.075 343.65	118.475 (CTAF) 0	121.65	121.65	122.95



ELEV 730	D	TDZE 721
TWR★	81	5081 X 100
005° 5.5 NM from FAF	36	0.7% UP
REIL Rwy 36		
HIRL Rwy 18-36		
3000	MAD R-317	ZATMI
hdg 005°		
*LOC only.		
*I-LOC 2.2	HUMOM I-LOC 2.8	DAAVY I-LOC 6.5
1220	2500	CUTMA I-LOC 12.6
GS unusable below 965 MSL.	GS 3.00° TCH 56	
1.3 NM	0.5 NM	3.7 NM
6.1 NM		
CATEGORY	A	B
S-ILS 36	971-¾	250 (300-¾)
S-LOC 36	1140-1 419 (500-1)	1140-1½ 419 (500-1½)
CIRCLING	1300-1 570 (600-1)	1380-1¾ 650 (700-1¾)
		1460-2¼ 730 (800-2¼)