

WAAS CH 72715 W33A	APP CRS 327°	Rwy Idg 4201 TDZE 322 Apt Elev 322
--	------------------------	---

RNAV (GPS) RWY 33
SKYHAVEN (DAW)

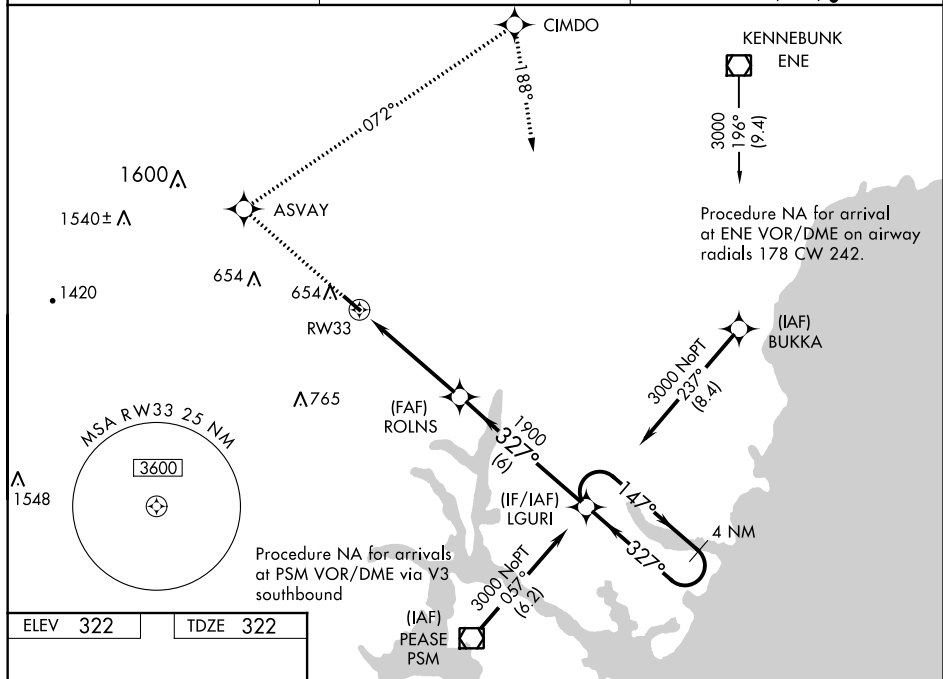
⚠ Baro-VNAV NA when using Portsmouth altimeter setting. For uncompensated Baro-VNAV systems, LNAV/VNAV NA below -1.5°C (5°F) or above 54°C (130°F). DME/DME RNP-0.3NA. Visibility reduction by helicopters NA. When local altimeter setting not received, use Portsmouth altimeter setting and increase all DA 62 feet and all MDA 80 feet, and LPV all Cats, LNAV/VNAV all Cats, LNAV Cat C, and Circling Cat B-C ¼ mile.

ODALS



MISSED APPROACH: Climb to 3000 direct ASVAY and via track 072° to CIMDO and via track 188° to LGURI and hold.

ASOS 135.275	BOSTON APP CON 125.05 269.4	UNICOM 122.7 (CTAF) L
------------------------	---------------------------------------	---------------------------------



4 NM Holding Pattern

3000

ASVAY tr 072°

CIMDO tr 188°

LGURI

147°

327°

1900

327°

3000

GP 3.00° TCH 43

4.8 NM

6 NM

CATEGORY	A	B	C	D
LPV DA	627-1	305 (400-1)		NA
RNAV/VNAV DA	695-1¼	373 (400-1¼)		NA
RNAV MDA	860-1	538 (600-1)	860-1½ 538 (600-1½)	NA
CIRCLING	1020-1	698 (700-1)	1020-2 698 (700-2)	NA

REIL Rwy 15

MIRL Rwy 15-33

4201 X 75

0.5% Up

425±

430±

327° to RW33

RW33

ROLNS