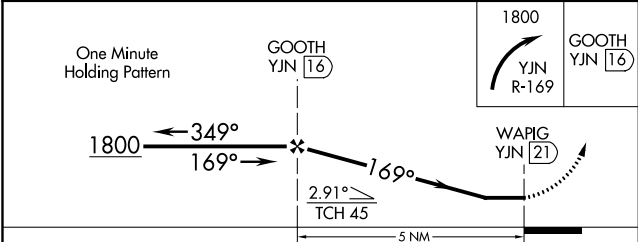
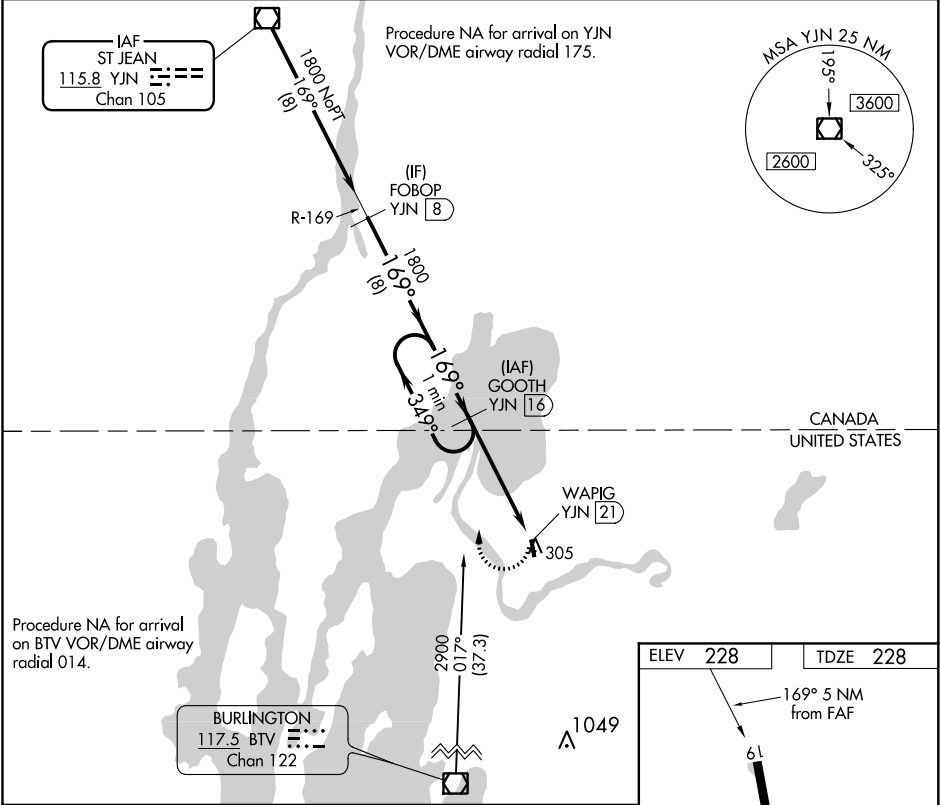


VOR/DME YJN	APP CRS	Rwy Idg	3001
115.8	169°	TDZE	228
Chan 105		Apt Elev	228

VOR RWY 19
FRANKLIN COUNTY STATE (F'SO)

DME required for procedure entry. DME required.	MISSED APPROACH: Climbing right turn to 1800 on YJN VOR/DME R-169 to GOOTH/YJN 16 DME and hold.
<p>▼ Rwy 19 helicopter visibility reduction below 1 SM NA. Procedure NA at night. When local altimeter setting not received, use Plattsburgh altimeter setting and increase all MDA 60 feet.</p> <p>▲ NA</p>	

AWOS-3 119.025	BURLINGTON APP CON ★ (EAST) 278.8 (WEST) 360.8	UNICOM 122.8 (CTAF) 0
-------------------	--	--------------------------



CATEGORY	A	B	C	D
S-19	880-1	652 (700-1)	NA	
CIRCLING	880-1 652 (700-1)	880-1¼ 652 (700-1¼)	NA	

