

APP CRS	Rwy Idg	3998
028°	TDZE	268
	Apt Elev	270

RNAV (GPS) RWY 3

CENTRAL MAINE AIRPORT OF NORRIDGEWOCK (OWK)

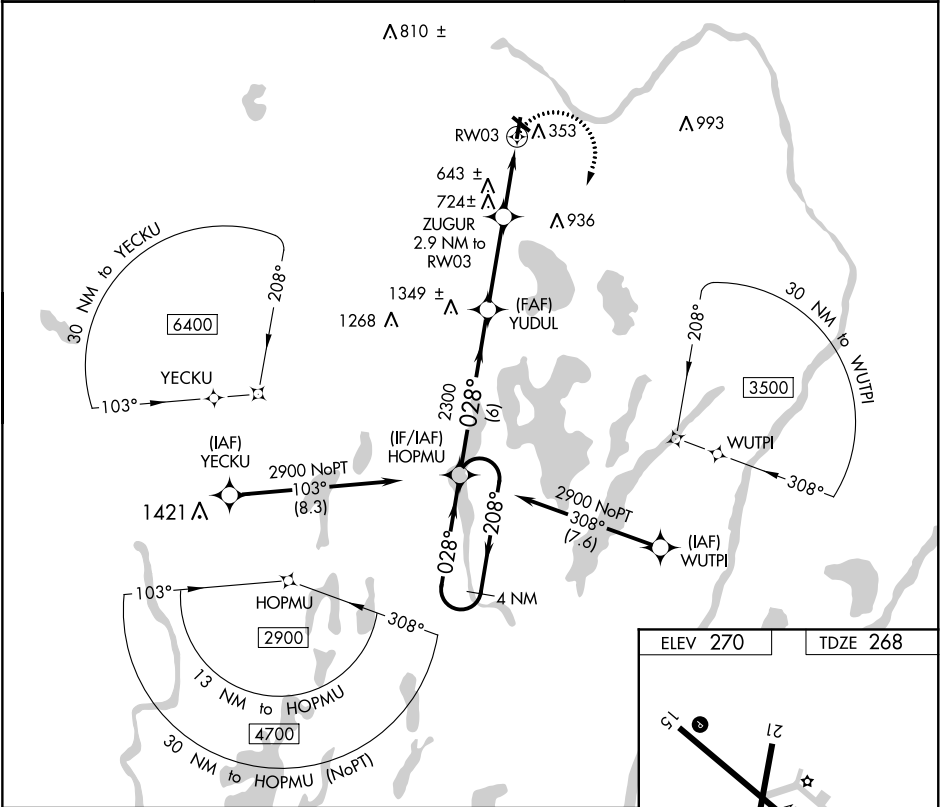
▼

▲ NA

DME/DME RNP-0.3 NA. When local altimeter setting not received, use Augusta State altimeter setting and increase all MDA 80 feet; increase LNAV Cat B visibility ¼ mile and Cat C visibility ½ mile and Circling Cat B visibility ¼ mile and Cat C visibility ½ mile.
Procedure NA at night. Helicopter visibility reduction below 1 SM NA.

MISSED APPROACH: Climbing right turn to 2900 direct HOPMU and hold.

AWOS-AV 122.8	PORTLAND APP CON ★ 128.35 299.2	UNICOM 122.8 (CTAF) 0
------------------	------------------------------------	--------------------------



4 NM Holding Pattern			Visual Segment - Obstacles.			2900	HOPMU

