

WAAS CH 72940 W15A	APP CRS 145°	Rwy Idg 4002 TDZE 44 Apt Elev 45
--	------------------------	---

RNAV (GPS) RWY 15
EASTPORT MUNI (EPM)

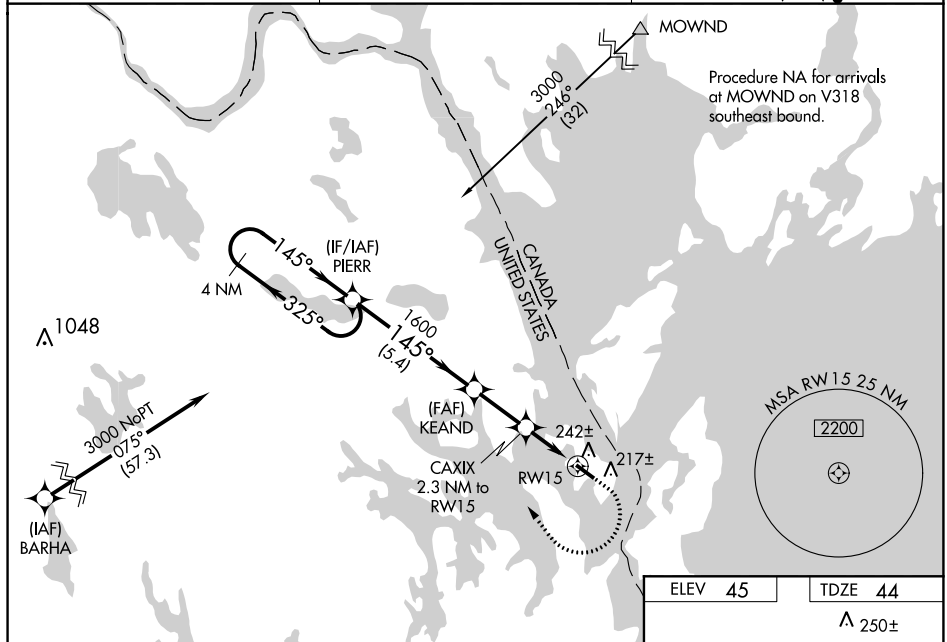
RNP APCH.

T
A NA

For uncompensated Baro-VNAV systems, LNAV/VNAV NA below -15°C or above 47°C, Rwy 15 helicopter visibility reduction below 1 SM NA. When local altimeter setting not received, use Hancock County-Bar Harbor altimeter setting: increase LPV DA to 462 feet and all visibilities $\frac{3}{8}$ SM; increase LNAV/VNAV DA to 565 feet and all visibilities $\frac{1}{2}$ SM; increase all MDA 160 feet and LNAV visibility Cat C and D $\frac{3}{8}$ SM and Circling visibility Cat C and D $\frac{1}{2}$ SM. Baro-VNAV NA when using Hancock County-Bar Harbor altimeter setting. Straight-in Rwy 15 NA at night, Circling Rwy 15 NA at night.

MISSED APPROACH:
Climb to 500 then
climbing right turn to
4000 direct PIERR
and hold, continue
climb-in-hold to 4000.

AWOS-AV 122.8	BOSTON CENTER 124.25 290.5	UNICOM 122.8 (CTAF) 0
-------------------------	--------------------------------------	---------------------------------



4 NM
Holding Pattern

PIERR

KEAND

CAXIX
2.3 NM to
RW15

RW15

*LNAV only

3000

← 325°
→ 145°

GP 3.10°
TCH 53

1600

145°

1600

*840

500 ↑

4000 ↻

PIRR ✦

		5.4 NM		2.3 NM		2.3 NM			
CATEGORY		A		B		C		D	
LPV	DA	309-1		265 (300-1)					
RNAV/ VNAV	DA	412-1¼		368 (400-1¼)					
RNAV	MDA	500-1 456 (500-1)		500-1⅜ 456 (500-1⅜)					
C CIRCLING		580-1 535 (600-1)		580-1½ 535 (600-1½)		720-2¼ 675 (700-2¼)			

