

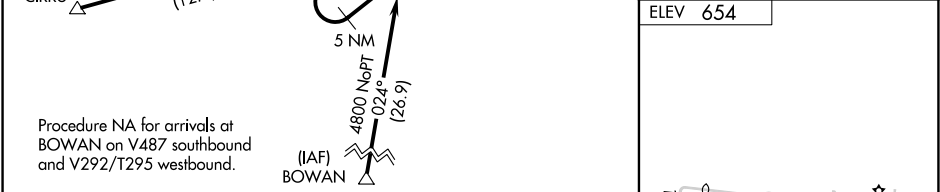
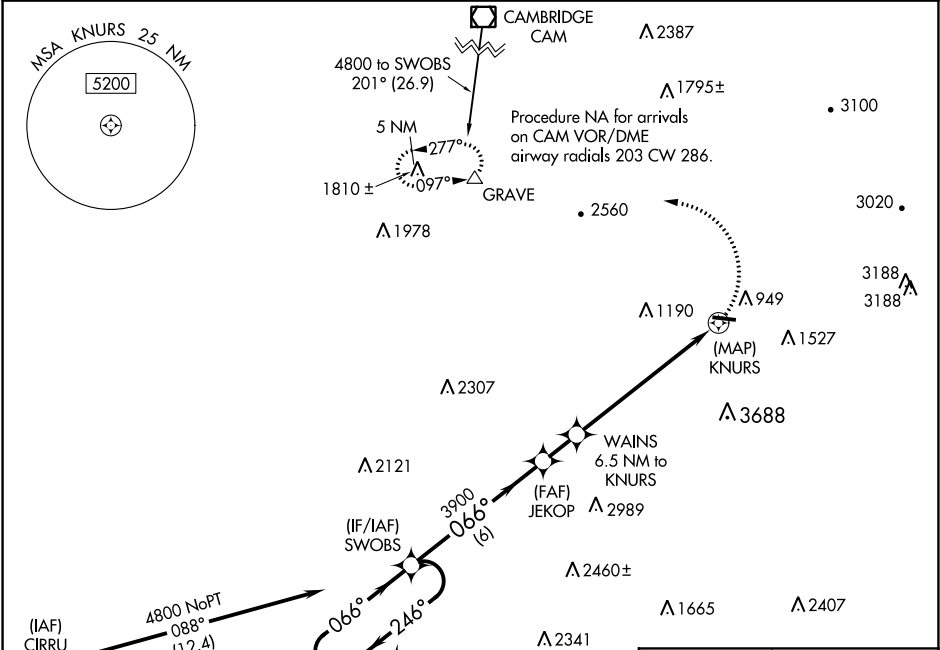
APP CRS	Rwy Idg	N/A
066°	TDZE	N/A
	Apt Elev	654

RNAV (GPS)-A
HARRIMAN-AND-WEST (AQW)

⚠ When local altimeter setting not received, use Bennington altimeter setting and increase all MDA 60 feet. Circling NA south of Rwy 11-29. DME/DME RNP-0.3 NA. Procedure NA at night.

MISSED APPROACH: Climbing left turn to 5000 direct GRAVE and hold, continue climb-in-hold to 5000.

ASOS 134.775	ALBANY APP CON 132.825 307.2	UNICOM 122.8 (CTAF) 0
-----------------	---------------------------------	---------------------------------



5 NM Holding Pattern				
SWOBS				
JEKOP				
WAINS 6.5 NM to KNURS				
KNURS				
MIRL Rwy 11-29 0				
CATEGORY	A	B	C	D
C CIRCLING	2740-1¼ 2086 (2100-1¼)	2740-1½ 2086 (2100-1½)	2780-3 2126 (2200-3)	NA

NE-1, 03 DEC 2020 to 31 DEC 2020

NE-1, 03 DEC 2020 to 31 DEC 2020