

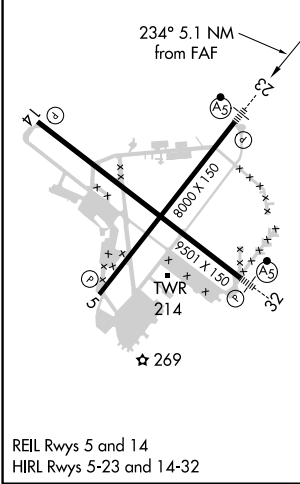
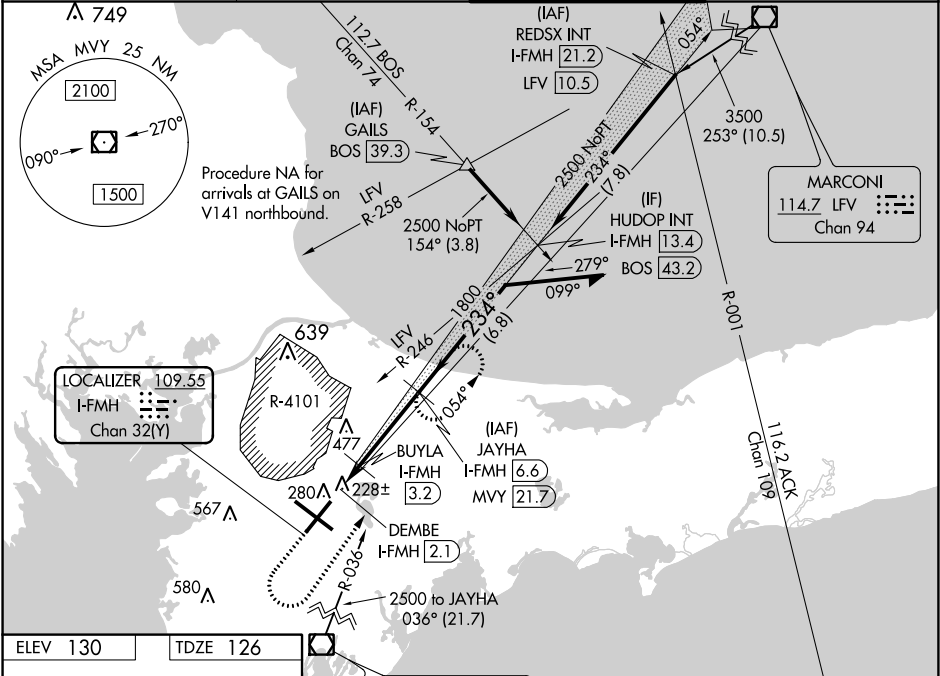
LOC/DME I-FMH 109.55 Chan 32(Y)	APP CRS 234°	Rwy Idg TDZE 126 Apt Elev 130
---	------------------------	---

COPTER ILS Y or LOC Y RWY 23

CAPE COD COAST GUARD AIR STATION (FMH)

DME required. For inop ALS increase, H-ILS 23 and H-LOC 23 visibility to RVR 2400. United States Coast Guard only.	MALSR 	MISSED APPROACH: Climb to 1400 then climbing left turn heading 050° and MVY VOR/DME R-036 to 3000 direct JAYHA and hold.
--	-----------	---

ATIS 120.475 236.825	BOSTON APP CON ★ 118.2 284.6	COAST GUARD TOWER 128.425 291.1	GND CON 124.15 275.8
--------------------------------	--	---	--------------------------------



1400	3000	MVY R-036	JAYHA I-FMH 6.6	JAYHA I-FMH 6.6	Remain within 5 NM
* LOC only.					
BUYLA I-FMH 3.2					
DEMBE I-FMH 2.1					
720*					
0.6 1.1 NM 3.4 NM					
CATEGORY COPTER					
H-ILS 23 226/12 100 (100-¼)					
H-LOC 23 480/12 354 (400-¼)					

NE-1, 03 DEC 2020 to 31 DEC 2020

NE-1, 03 DEC 2020 to 31 DEC 2020