

LOC/DME I-FMH	APP CRS	Rwy Idg	8000
109.55	234°	TDZE	126
Chan 32(Y)		Apt Elev	130

ILS Z or LOC Z RWY 23

CAPE COD COAST GUARD AIR STATION (F'MH)

DME required.

▲

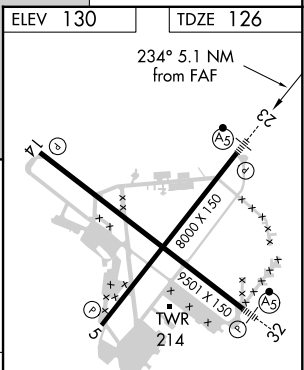
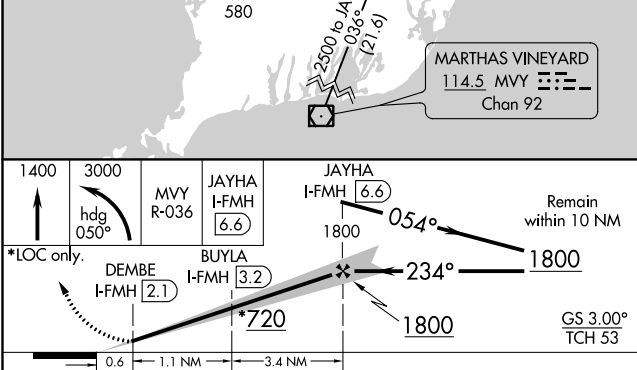
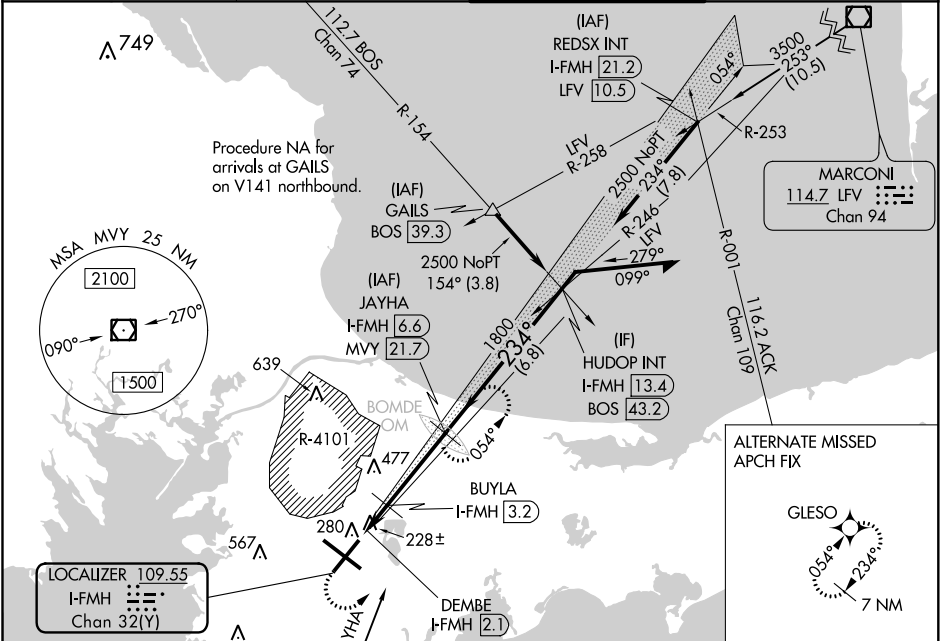
Circling NA northeast of Rwy 14 and northwest of Rwy 23. For inop ALS, increase S-LOC 23 Cats C/D visibility to RVR 5500.
#RVR 1800 authorized with use of FD or AP or HUD to DA.

MALSR

AS

MISSED APPROACH: Climb to 1400 then climbing left turn heading 050° and MVY VOR/DME R-036 to 3000 direct JAYHA and hold.

ATIS	BOSTON APP CON ★	COAST GUARD TOWER	GND CON
120.475 236.825	118.2 284.6	128.425 291.1	124.15 275.8



CATEGORY	A	B	C	D
S-ILS 23#		326/24	200 (200-½)	
S-LOC 23	480/24	354 (400-½)	480/30	354 (400-¾)
CIRCLING	580-1 450 (500-1)	640-1 510 (600-1)	900-2¼ 770 (800-2¼)	900-2½ 770 (800-2½)

