

WAAS CH 97337 W23A	APP CRS 234°	Rwy Idg TDZE 126 Apt Elev 130
--	------------------------	---

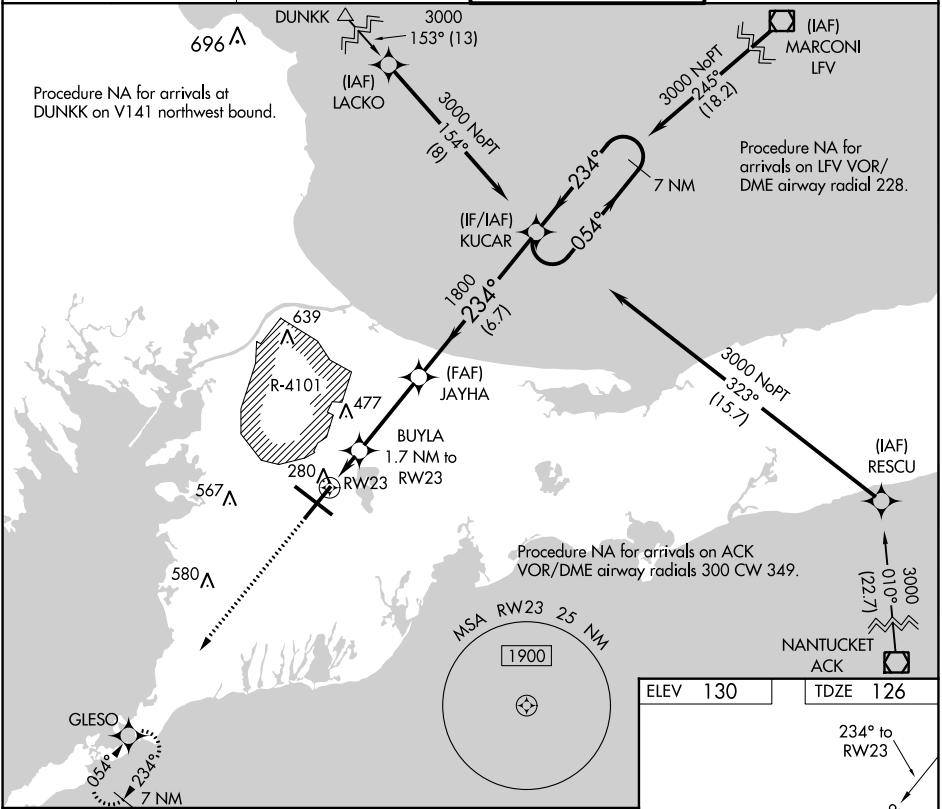
RNAV (GPS) RWY 23

CAPE COD COAST GUARD AIR STATION (F'MH)

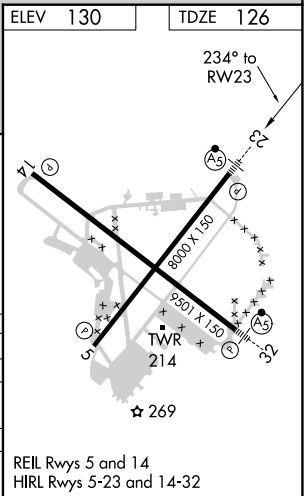
▲ For uncompensated Baro-VNAV systems, LNAV/VNAV NA below -15°C (5°F) or above 54°C (130°F).
DME/DME RNP-0.3 NA. Circling NA NE of Rwy 14 and NW of Rwy 23. For inoperative MALSR, increase LNAV/VNAV all Cats visibility to RVR 4500 and LNAV Cats C and D visibility to RVR 6000.

MISSED APPROACH:
Climb to 3000 direct GLESO and hold.

ATIS 120.475 236.825	BOSTON APP CON ★ 118.2 284.6	COAST GUARD TOWER 128.425 291.1	GND CON 124.15 275.8
--------------------------------	--	---	--------------------------------



3000	GLESO	*LNAV only.	JAYHA	KUCAR	7 NM
↑	✧			Holding Pattern	
		*1.1 NM to RW23	BUYLA 1.7 NM to RW23	1800	054° → 3000
				720*	← 234°
				1800	GP 3.00° TCH 54
		1.1 NM	0.6 NM	3.4 NM	6.7 NM
CATEGORY	A	B	C	D	
LPV DA		326/24	200 (200-½)		
LNAV/VNAV DA		441/26	315 (400-½)		
LNAV MDA	540/24	414 (500-½)	540/40	414 (500-¾)	
✧ CIRCLING	580-1 450 (500-1)	640-1 510 (600-1)	900-2¼ 770 (800-2¼)	900-2½ 770 (800-2½)	



NE-1, 03 DEC 2020 to 31 DEC 2020

NE-1, 03 DEC 2020 to 31 DEC 2020