

|               |         |              |      |
|---------------|---------|--------------|------|
| LOC/DME I-DEJ | APP CRS | Rwy Idg TDZE | 8500 |
| 109.5         | 011°    | 284          |      |
| Chan 32       |         | Apt Elev     | 285  |

ILS or LOC RWY 1

ALBANY INTL (ALB)

⚠

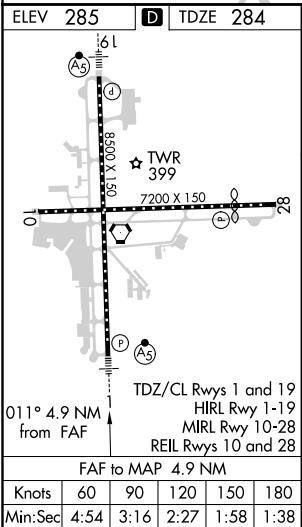
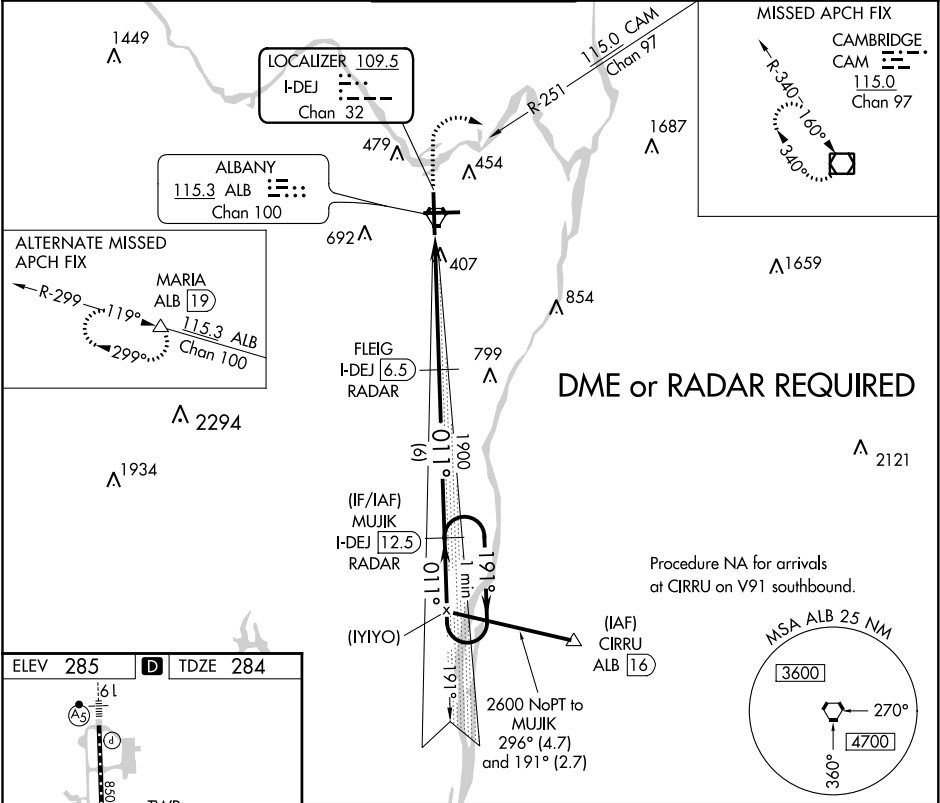
⚠

Circling NA west of Rwy 1-19. DME or RADAR required.

MALSR

MISSED APPROACH: Climb to 800 then climbing right turn to 5000 and on CAM VOR/DME R-251 to CAM VOR/DME and hold.

|        |                |              |             |          |
|--------|----------------|--------------|-------------|----------|
| D-ATIS | ALBANY APP CON | ALBANY TOWER | GND CON     | CLNC DEL |
| 120.45 | 132.825 307.2  | 119.5 257.8  | 121.7 348.6 | 127.50   |



|   |                    |             |                       |                        |                            |
|---|--------------------|-------------|-----------------------|------------------------|----------------------------|
| 800   | 5000               | CAM         | FLEIG I-DEJ 6.5 RADAR | MUJIK I-DEJ 12.5 RADAR | One Minute Holding Pattern |
| ↑   |                    |             |                       |                        |                            |
| * LOC only.                                 |                    |             |                       |                        |                            |
|   |                    |             |                       |                        |                            |
| Use I-DEJ DME when on the localizer course. |                    |             |                       |                        |                            |
| CATEGORY                                    | A                  | B           | C                     | D                      |                            |
| S-ILS 1                                     | 484/18 200 (200-½) |             |                       |                        |                            |
| S-LOC 1                                     | 720/24             | 436 (500-½) | 720/40                | 436 (500-¾)            |                            |
| CIRCLING                                    | 820-1              | 535 (600-1) | 820-1½                | 960-2¼                 | 675 (700-2¼)               |