

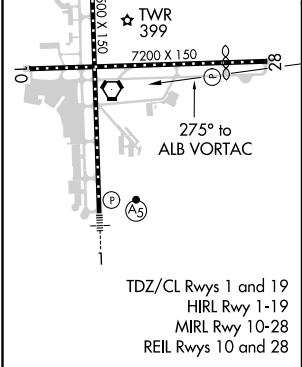
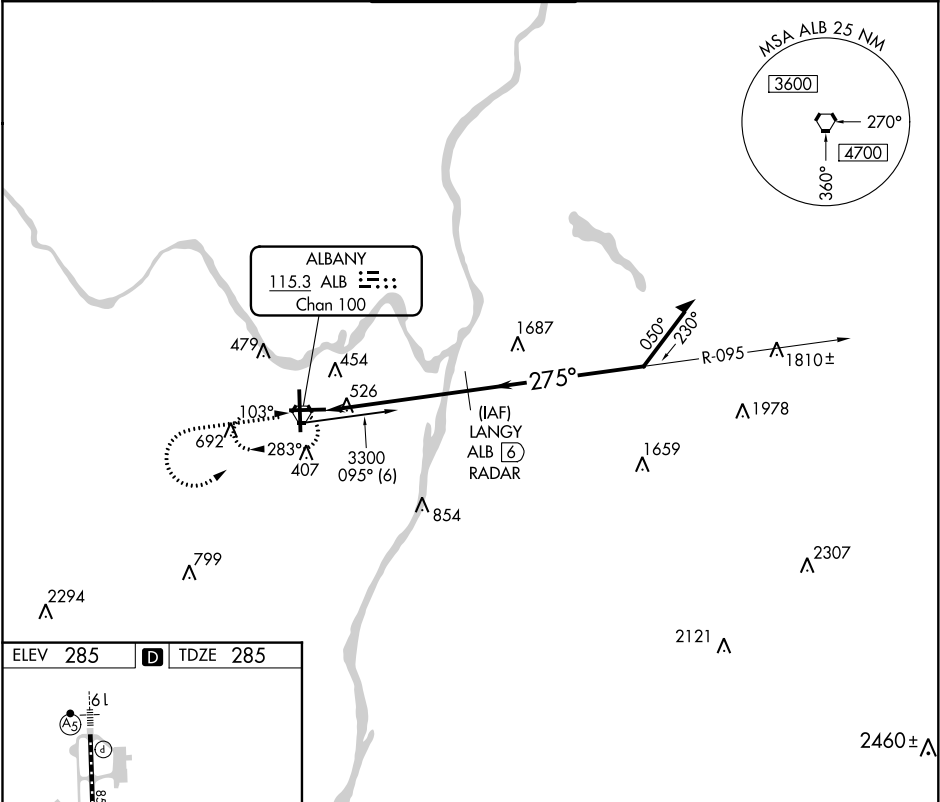
VORTAC ALB	APP CRS	Rwy Idg	6007
<u>115.3</u>	<u>275°</u>	TDZE	285
Chan <u>100</u>		Apt Elev	285

VOR RWY 28

ALBANY INTL (ALB)

DME or RADAR required.	MISSED APPROACH: Climb to 3000, then climbing left turn to 4000 direct ALB VORTAC and hold.
<div><div>▼</div><div>Circling NA West of Rwy 1-19. Straight-in Rwy 28 NA at night, Circling Rwy 28 NA at night. Rwy 28 helicopter visibility reduction below 1 SM NA.</div></div>	

D-ATIS	ALBANY APP CON	ALBANY TOWER	GND CON	CLNC DEL
120.45	132.825 307.2	119.5 257.8	121.7 348.6	127.50



3000	4000	ALB	LANGY ALB (6)/RADAR	Remain within 10 NM
↑	↩	⬡	095°	3300
ALB VORTAC		2300	275°	VGSI and descent angles not coincident (VGSI Angle 3.35/TCH 51).
0.6		5.4 NM		
CATEGORY	A	B	C	D
S-28	780-1	495 (500-1)	780-1¼ 495 (500-1¼)	780-1½ 495 (500-1½)
<div>CIRCLING</div>	820-1	535 (600-1)	820-1½ 535 (600-1½)	960-2¼ 675 (700-2¼)

NE-2, 03 DEC 2020 to 31 DEC 2020

NE-2, 03 DEC 2020 to 31 DEC 2020