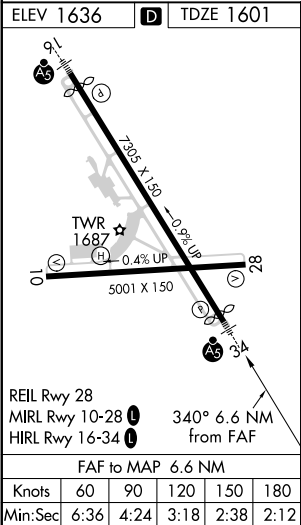
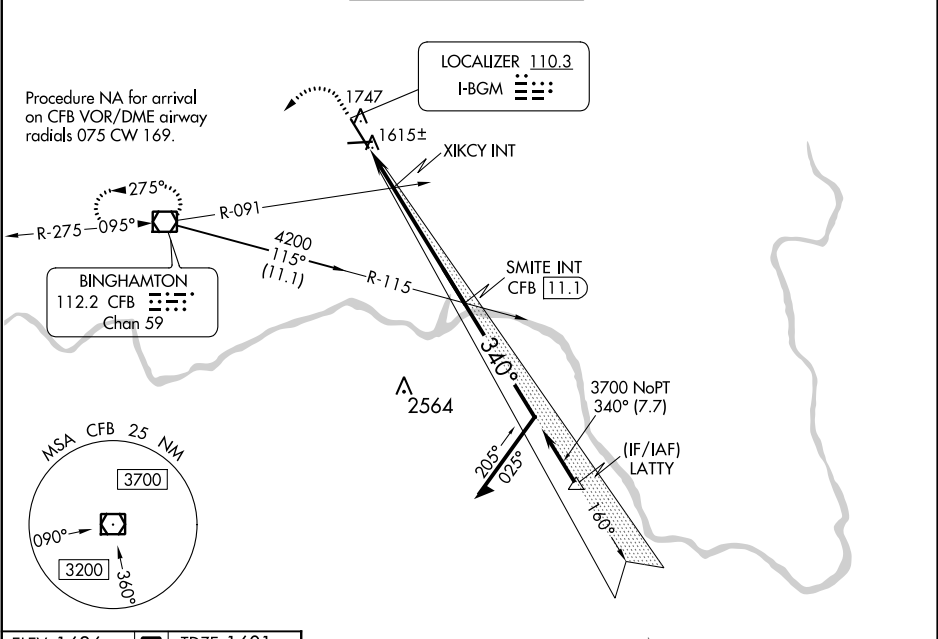


LOC I-BGM 110.3	APP CRS 340°	Rwy Idg TDZE Apt Elev 7100 1601 1636
---------------------------	------------------------	--

ILS or LOC RWY 34

GREATER BINGHAMTON/EDWIN A LINK FIELD (BGM)

<div><div>▼</div><div>▲</div></div>	<div>MALSR</div> <div></div>	MISSED APPROACH: Climb to 2200 then climbing left turn to 3900 direct CFB VOR/DME and hold, continue climb-in-hold to 3900.			
ATIS 128.15	BINGHAMTON APP CON * 118.6 257.625	BINGHAMTON TOWER * 119.3 (CTAF) 0 239.25	GND CON 121.9	CLNC DEL 125.05	UNICOM 122.95



2200	3900	CFB	* LOC only. * 2180 when using Ithaca altimeter setting.	SMITE INT	Remain within 10 NM
VGSI and ILS glidepath not coincident (VGSI Angle 3.00/TCH 64).					
		XIKCY INT	2040*	3700	3700
			1.7 NM	4.9 NM	
CATEGORY	A	B	C	D	
S-ILS 34	1851/24 250 (300-½)				
S-LOC 34	2040/24	439 (500-½)	2040/40	439 (500-¾)	
CIRCLING	2120-1	484 (500-1)	2120-1½ 484 (500-1½)	2200-2 564 (600-2)	
XIKCY FIX MINIMUMS					
S-LOC 34	1940/24	339 (400-½)	1940/26	339 (400-½)	
CIRCLING	2120-1	484 (500-1)	2120-1½ 484 (500-1½)	2200-2 564 (600-2)	