

WAAS
CH **93820**
W10A

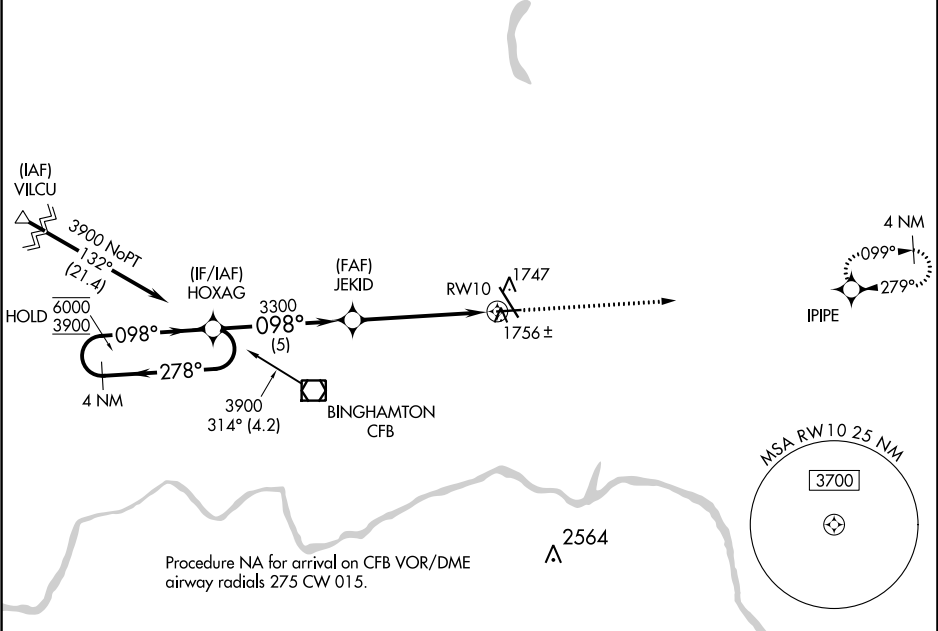
APP CRS
098°

Rwy Idg
TDZE **1591**
Apt Elev **1636**

RNAV (GPS) RWY 10

GREATER BINGHAMTON/EDWIN A LINK FIELD (BGM)

RNP APCH.		MISSED APPROACH: Climb to 4200 direct IPIPE and hold.			
<div><div></div><div>For uncompensated Baro-VNAV systems, LNAV/VNAV NA below -21°C or above 54°C.</div></div>					
ATIS 128.15	BINGHAMTON APP CON * 118.6 257.625	BINGHAMTON TOWER * 119.3 (CTAF) 0 239.25	GND CON 121.9	CLNC DEL 125.05	UNICOM 122.95



ELEV 1636 D TDZE 1591

4 NM Holding Pattern
HOXAG
6000 ← 278°
3900 → 098°
GP 3.00°
TCH 53

JEKID
3300
*1.2 NM to RW10
RW10
*LNAV only

4200 IPIPE

CATEGORY	A	B	C	D
LPV DA		1841-3/4	250 (300-3/4)	
LNAV/VNAV DA		1937-1	346 (400-1)	
LNAV MDA	2020-1	429 (400-1)	2020-1 1/4	429 (400-1 1/4)
CIRCLING	2120-1	484 (500-1)	2120-1 1/2	2200-2 564 (600-2)

REIL Rwy 28
MIRL Rwy 10-28
HIRL Rwy 16-34

7305 X 150
5001 X 150
0.4% UP
0.2% UP
01 28
098° to RW10