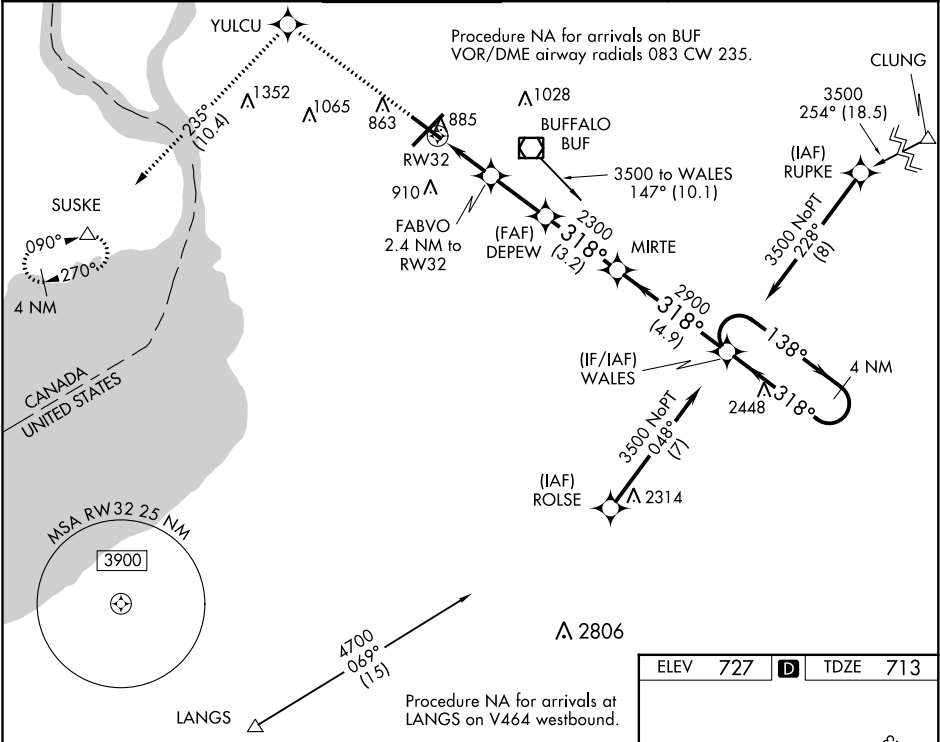


WAAS CH 81811 W32A	APP CRS 318°	Rwy Idg TDZE Apt Elev	6121 713 727
--	------------------------	-----------------------------	---

RNAV (GPS) RWY 32
BUFFALO NIAGARA INTL (BUF)

 For uncompensated Baro-VNAV systems LNAV/VNAV NA below -17°C (2°F) or above 39°C (102°F). DME/DME RNP-0.3 NA. Visibility reduction by helicopters NA. For inop MALSR, increase LNAV/VNAV, all Cats visibility to 1½ mile. Inop table does not apply to LPV all Cats.	 MALSR	MISSED APPROACH: Climb to 3000 direct YULCU on track 235° to SUSKE and hold.
--	---	--

D-ATIS 135.35	BUFFALO APP CON 126.15 263.125	BUFFALO TOWER 120.5 257.8	GND CON 133.2 257.8	CLNC DEL 124.7 257.8	CPDLC
-------------------------	--	-------------------------------------	-------------------------------	--------------------------------	-------



3000	YULCU	tr 235°	SUSKE	
* LNAV only.				
FABVO 2.4 NM to RW32				
DEPEW 2300				
MIRTE 2900				
WALES 3500				
4 NM Holding Pattern				
GP 3.00° TCH 54				
1.2 NM 1.2 NM 2.4 NM 3.2 NM 4.9 NM				
CATEGORY	A	B	C	D
LPV DA		913-¾	200 (200-¾)	
LNAV/VNAV DA		1092-¾	379 (400-¾)	
LNAV MDA		1140-¾	427 (500-¾)	
CIRCLING	1200-1	473 (500-1)	1220-1½ 493 (500-1½)	1340-2 613 (700-2)

