

LOC I-UEK	APP CRS	Rwy ldg	7401
109.1	062°	TDZE	944
		Apt Elev	955

ILS or LOC RWY 6

ELMIRA/CORNING RGNL (ELM)

▼

▲

☼

-17°C

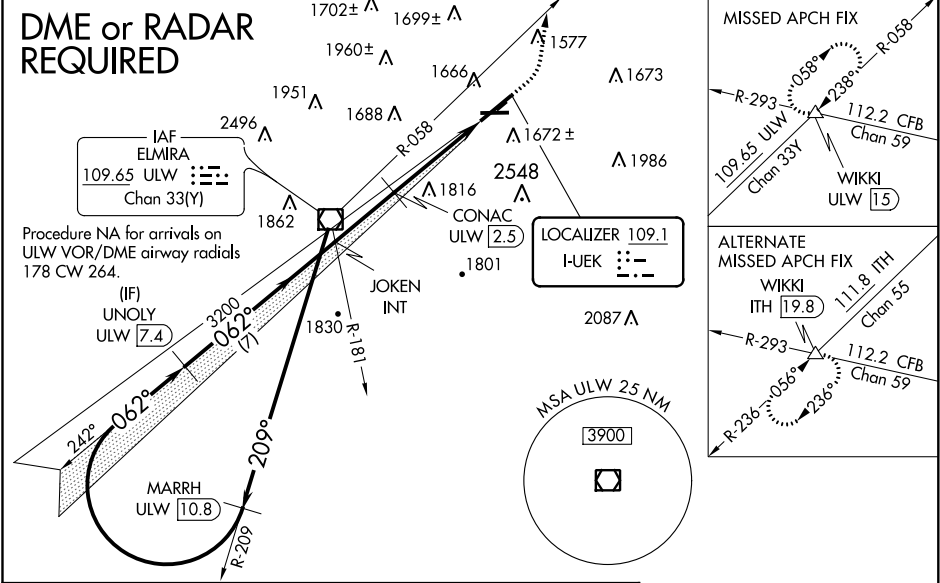
Night landing: Rwy 10 NA. Inop table does not apply to S-LOC 6 Cats A/C/D. When local altimeter setting not received, use Penn Yan altimeter setting and increase all DA 73 feet and all MDA 80, and increase S-LOC 6 Cat B and CONAC fix minimums S-LOC 6 Cats C/D visibility ½ mile; inop table does not apply to S-LOC 6 all Cats and CONAC fix minimums S-LOC 6 Cats C/D; for inop MALSR increase S-ILS 6 all Cats visibility to ¾ mile. **DME from ULW VOR/DME

MALSR

AS

MISSED APPROACH: Climb to 2400 then climbing left turn to 4000 on heading 020° and ULW VOR/DME R-058 to WIKKI INT/ULW 15 DME and hold, continue climb-in-hold to 4000.

ATIS	ELMIRA APP CON *	ELMIRA TOWER *	GND CON	CLNC DEL	UNICOM
125.475	128.425 257.8	121.1 (CTAF) 0 257.8	121.9	121.9	122.95



VGSI and ILS glidepath not coincident (VGSI Angle 3.00/TCH 51).				ELEV 955		D TDZE 944	
ULW VOR/DME				ULW R-058		WIKKI △	
				HRL Rwy 6-24 MIRL Rwy 10-28			
GS 3.00° TCH 52							
CATEGORY	A		B		C		D
S-ILS 6			1144-½ 200 (200-½)				
S-LOC 6	2320-1¼ 1376 (1400-1¼)		2320-1 1376 (1400-1)		2320-3 1376 (1400-3)		
CIRCLING	2320-1¼ 1365 (1400-1¼)		2320-1½ 1365 (1400-1½)		2320-3 1365 (1400-3)		
CONAC FIX MINIMUMS**							
S-LOC 6	2020-¾ 1076 (1100-¾)		2020-1 1076 (1100-1)		2020-2½ 1076 (1100-2½)		
CIRCLING	2100-1¼ 1145 (1200-1¼)		2100-1½ 1145 (1200-1½)		2120-3 1205 (1300-1)		2160-3