

WRIGHTSTOWN, NEW JERSEY

ILS or LOC RWY 24

LOC I-JTQ 110.1	APCH CRS 238°	Rwy Idg 10,014	TDZE 117	Arpt Elev 141
--------------------	------------------	-------------------	-------------	------------------

AL-150 (USAF)  
MC GUIRE FIELD (JOINT BASE MC GUIRE DIX LAKEHURST) (KWRI)

**⚠** \* When ALS inop, increase RVR to 40, vis to 3/4 mile.  
\*\* When ALS inop, increase CAT A8 RVR to 55, vis to 1 mile, CAT CDE vis to 1 3/8 miles.  
\*\*\* Circling East of the Airfield NA when R-5001 A/B active.

ALSF-1 	MISSED APPROACH: Climb to 2000 via GXU R-236 to CISON and hold.
------------	---

ATIS 110.6 270.1	MC GUIRE APP CON 126.475 363.8	TOWER 118.65 255.6	GND CON 121.8 275.8	CLNC DEL 135.2 335.8	PAR
---------------------	-----------------------------------	-----------------------	------------------------	-------------------------	-----

Autopilot coupled approach  
NA below 580 ft.

RADAR required for  
holding above 2000  
and/or > 230 KIAS.

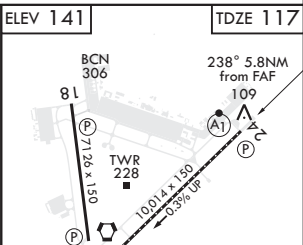
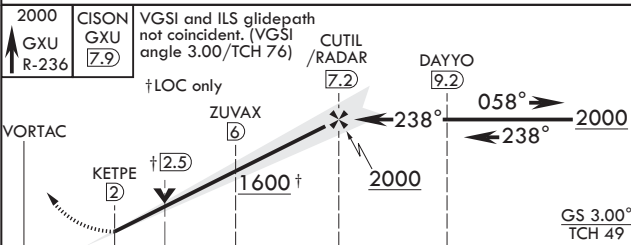
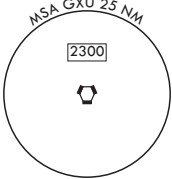
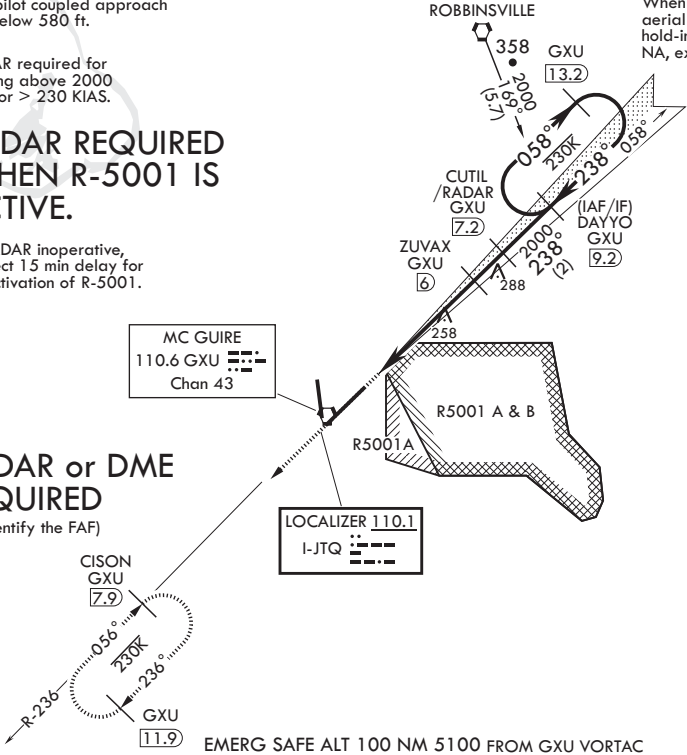
RADAR REQUIRED  
WHEN R-5001 IS  
ACTIVE.

If RADAR inoperative,  
expect 15 min delay for  
deactivation of R-5001.

When R-5001 is active with  
aerial gunnery, DAYYO  
hold-in-lieu of procedure turn  
NA, expect RADAR vectors.

RADAR or DME  
REQUIRED

(To identify the FAF)



CATEGORY	A	B	C	D	E
S-ILS 24*	317/24	200	(200-1/2)		
S-LOC 24**	560/24 443 (500-1/2)	560/45 443 (500-3/4)			
<b>C</b> CIRCLING***	680-1 539 (600-1)	700-1 1/2 559 (600-1 1/2)	700-2 559 (600-2)	1200-3 1059 (1100-3)	

FAF to MAP 5.2 NM					
Knots	60	90	120	150	180
Min:Sec	5:12	3:28	2:36	2:05	1:44

WRIGHTSTOWN, NEW JERSEY

MC GUIRE FIELD (JOINT BASE MC GUIRE DIX LAKEHURST) (KWRI)

Amdt 3 05DEC19

40°01'N - 74°36'W

ILS or LOC RWY 24

NE-2, 03 DEC 2020 to 31 DEC 2020

NE-2, 03 DEC 2020 to 31 DEC 2020