

WRIGHTSTOWN, NEW JERSEY

ILS or LOC RWY 6

MC GUIRE FLD,

LOC I-WRI 110.1	APCH CRS 058°	Rwy ldg 10,014 TDZE 131 Arpt Elev 141
---------------------------	-------------------------	--

AL-150 [USAF]

(JOINT BASE MC GUIRE DIX LAKEHURST) (KWRI)

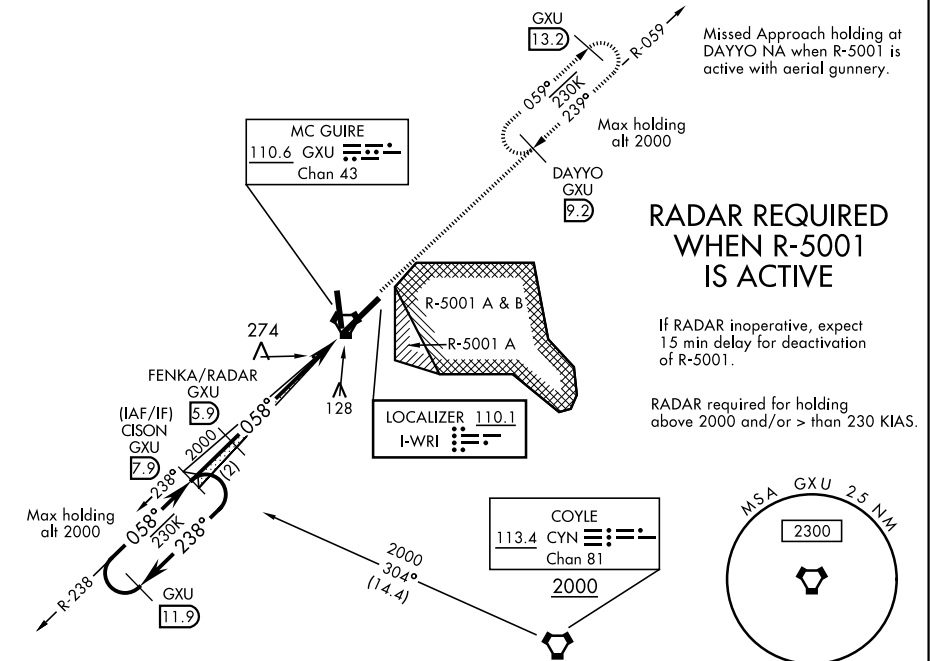
- ▼
- * When ALS inop, increase RVR to 40, vis to ¾ mile.
 - * When TDZ/CL lights inop increase RVR to 24.
 - ** When ALS inop, increase CAT AB RVR to 55, vis to 1 mile; CAT CDE RVR to 60, vis to 1 ½ miles.



MISSED APPROACH: Climb to 2000 via GXU R-059 to DAYYO and hold. Alternate Missed Approach Instruction: Climb to 2000 via GXU R-059 to DAYYO, expect further clearance from ATC.

ATIS 110.6 270.1	MC GUIRE APP CON 126.475 363.8	MC GUIRE TOWER 118.65 255.6	GND CON 121.8 275.8	CLNC DEL 135.2 335.8	PAR
----------------------------	--	---------------------------------------	-------------------------------	--------------------------------	-----

*** Circling East of Airfield NA when R-5001 A/B Active.



RADAR REQUIRED WHEN R-5001 IS ACTIVE

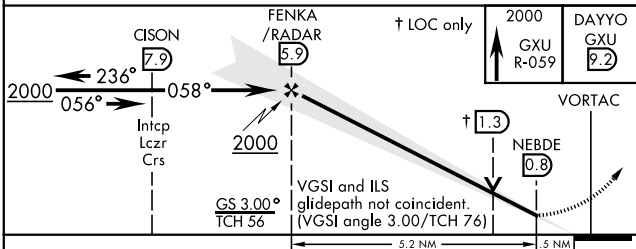
If RADAR inoperative, expect 15 min delay for deactivation of R-5001.

RADAR required for holding above 2000 and/or > than 230 KIAS.

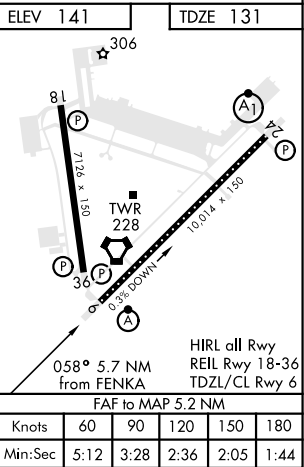
RADAR or DME REQUIRED

(To identify the FAF)

EMERG SAFE ALT 100 NM 5100 FROM GXU VORTAC



CATEGORY	A	B	C	D	E
S-ILS 6 *	331/18 200 (200-½)				
S-LOC 6 **	540/24 409 (400-½) 540/40 409 (400-¾)				
CIRCLING ***	680-1 539 (600-1) 700-1½ 559 (600-1½) 700-2 559 (600-2) 1200-3 1059 (1100-3)				



WRIGHTSTOWN, NEW JERSEY

40°01'N-74°36'W

MC GUIRE FLD,

Amtd 3 05DEC19

(JOINT BASE MC GUIRE DIX LAKEHURST) (KWRI)

ILS or LOC RWY 6

NE-2, 03 DEC 2020 to 31 DEC 2020

NE-2, 03 DEC 2020 to 31 DEC 2020