

APCH CRS 185°	Rwy Idg 7126 TDZE 123 Arpt Elev 141
------------------	---

AL-150 (USAF)
MC GUIRE FIELD (JOINT BASE MC GUIRE DIX LAKEHURST) (KWRI)

T * Circling East of Airfield NA when R-5001 A/B active.

MISSED APPROACH: Climb to 2000 direct KRIZZ and hold.

ATIS 110.6 270.1	MC GUIRE APP CON 126.475 363.8	TOWER 118.65 255.6	GND CON 121.8 275.8	CLNC DEL 135.2 335.8	PAR
---------------------	-----------------------------------	-----------------------	------------------------	-------------------------	-----

DME/DME RNP-0.3 NA

**RADAR required for
holding above 2000
and/or > 230 KIAS.**

RADAR REQUIRED
WHEN R-5001 IS
ACTIVE AND/OR
R-5002 IS ACTIVE.

If RADAR inoperative, expect 15 min delay for deactivation of R-5001 and/or R-5002.

(IAF/IF)
BINRE

2000
-185
(6)

(FAF)
DUOVR

350
△

RW18

R5001 A & B

R5001A

KRIZZ

Min holding
alt 2000

4 NM

Alternate Missed Approach
instructions: Climb to 2000
direct KRIZZ, expect further
clearance from ATC.

Missed approach holding at KRIZZ NA when R-5001 is active with aerial gunnery.

MSA RW18 25 NM

2300

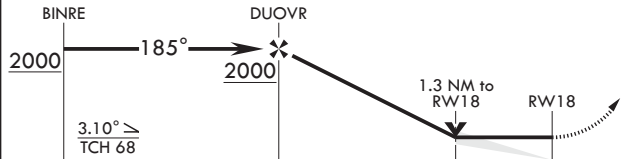
EMERG SAFE ALT 100 NM 5100

2000

KRI77

ELEV 141

TDZE 123



CATEGORY	A	B	C	D	E
LNAV MDA	600-1	477 (500-1)	600-1 $\frac{3}{4}$	477	(500-1 $\frac{3}{4}$)
C CIRCLING*	680-1	539 (600-1)	700-1 $\frac{1}{2}$ 559 (600-1 $\frac{1}{2}$)	700-2 559 (600-2)	1200-3 1059 (1100-3)

