

WRIGHTSTOWN, NEW JERSEY

RNAV (GPS) RWY 6

WAAS CH 91356 W06A	APCH CRS 058°	Rwy ldg TDZE Arprt Elev	10,014 131 141
--------------------------	------------------	-------------------------------	----------------------

AL-150 (USAF)
MC GUIRE FIELD (JOINT BASE MC GUIRE DIX LAKEHURST) (KWRI)

⚠ * When TDZ/CL lights inop, increase RVR to 24. When ALS inop, increase RVR to 40, vis to 3/4 mile.
** When ALS inop, increase vis to 1 1/4 miles.
*** When ALS inop, increase CAT AB RVR to 55, vis to 1 mile; CAT CDE vis to 1 1/4 miles.

ALSIF-2 	MISSED APPROACH: Climb to 2000 direct DAYYO and hold.
-------------	---

ATIS 110.6 270.1	MC GUIRE APP CON 126.475 363.8	TOWER 118.65 255.6	GND CON 121.8 275.8	CLNC DEL 135.2 335.8	PAR
---------------------	-----------------------------------	-----------------------	------------------------	-------------------------	-----

**** Circling East of Airfield NA when R-5001 A/B active.

DME/DME RNP-0.3 NA

For uncompensated Baro-VNAV systems, Procedure NA below -15°C (5°F) or above 52°C (126°F).

Alternate Missed Approach instructions: Climb to 2000 direct DAYYO, expect further clearance from ATC.

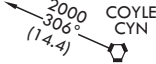
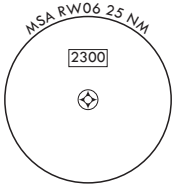
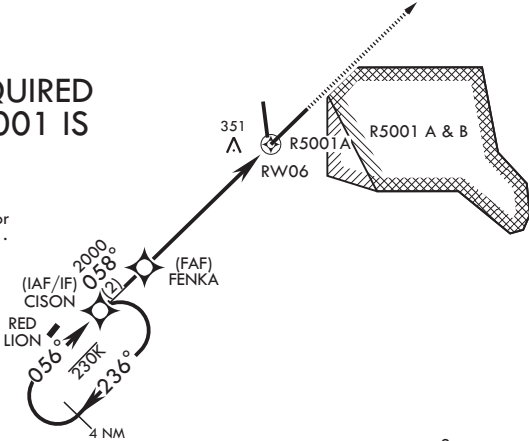
Missed approach holding at DAYYO NA when R-5001 is active with aerial gunnery.



RADAR required for holding above 2000 and/or > 230 KIAS.

RADAR REQUIRED WHEN R-5001 IS ACTIVE.

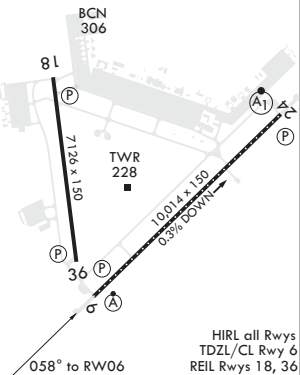
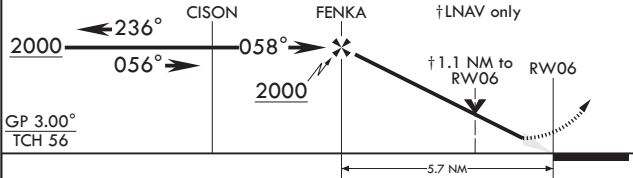
If RADAR inoperative, expect 15 min delay for deactivation of R-5001.



EMERG SAFE ALT 100 NM 5100

VGSI and RNAV glidepath not coincident (VGSI angle 3.00/TCH 76°).

2000 	DAYYO 	ELEV 141	TDZE 131
----------	-----------	----------	----------



CATEGORY	A	B	C	D	E
LPV DA*	331/18		200	(200-1/2)	
LNAV/VNAV DA**	560/40		429	(500-3/4)	
LNAV MDA***	560/24 429 (500-1/2)		560/40 429 (500-3/4)		
CIRCLING****	680-1 539 (600-1)		700-1 1/2 559 (600-1 1/2)	700-2 559 (600-2)	1200-3 1059 (1100-3)

WRIGHTSTOWN, NEW JERSEY

MC GUIRE FIELD (JOINT BASE MC GUIRE DIX LAKEHURST) (KWRI)

Amtd 6 10OCT19

40°01'N - 74°36'W

RNAV (GPS) RWY 6

NE-2, 03 DEC 2020 to 31 DEC 2020

NE-2, 03 DEC 2020 to 31 DEC 2020