

VOR/DME or TACAN RWY 18

MC GUIRE FLD.

(JOINT BASE MC GUIRE DIX LAKEHURST) (KWRI)

VORTAC GXU 110.6 Chan 43	APCH CRS 179°	Rwy Idg 7126 TDZE 123 Arpt Elev 141
--	-------------------------	--

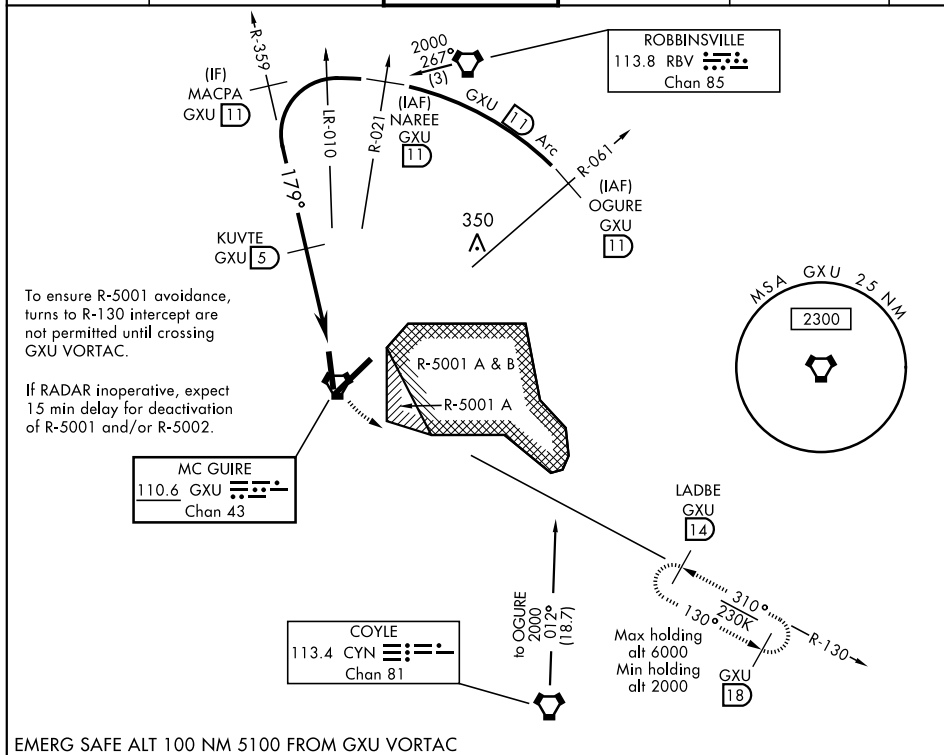
AL-150 [USAF]

RADAR required when R-5001 and/or R-5002 is active.

T * Circling East of airfield NA when R-5001 A/B active.

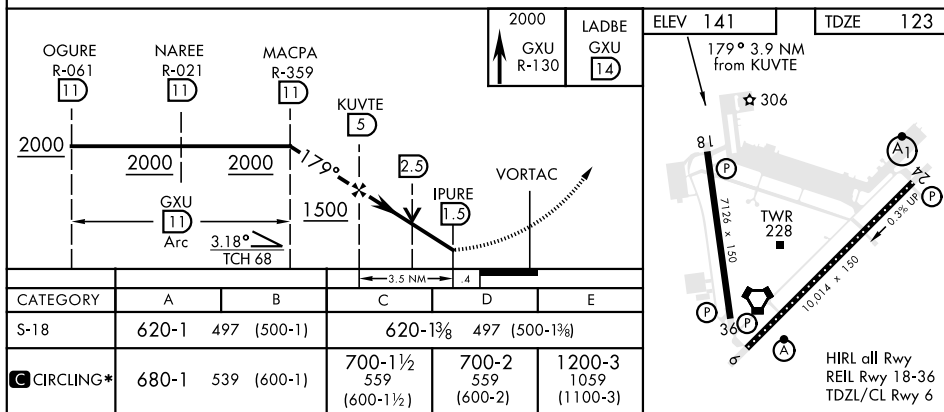
MISSED APPROACH: Climb to 2000 via GXU VORTAC R-130 to LADBE and hold. DO NOT turn prior to GXU.

ATIS	MC GUIRE APP CON	MC GUIRE TOWER	GND CON	CLNC DEL	PAR
110.6 270.1	126.475 363.8	118.65 255.6	121.8 275.8	135.2 335.8	



NE-2, 03 DEC 2020 to 31 DEC 2020

EMERG SAFE ALT 100 NM 5100 FROM GXU VORTAC



VOR/DME or TACAN RWY 18