

TACAN RWY 24

LAKEHURST MAXFIELD FLD.

(JOINT BASE MC GUIRE DIX LAKEHURST) (KNEL)

TACAN NEL Chan 55	APCH CRS 250°	Rwy Idg 5002 TDZE 101 Arpt Elev 101
-----------------------------	-------------------------	--

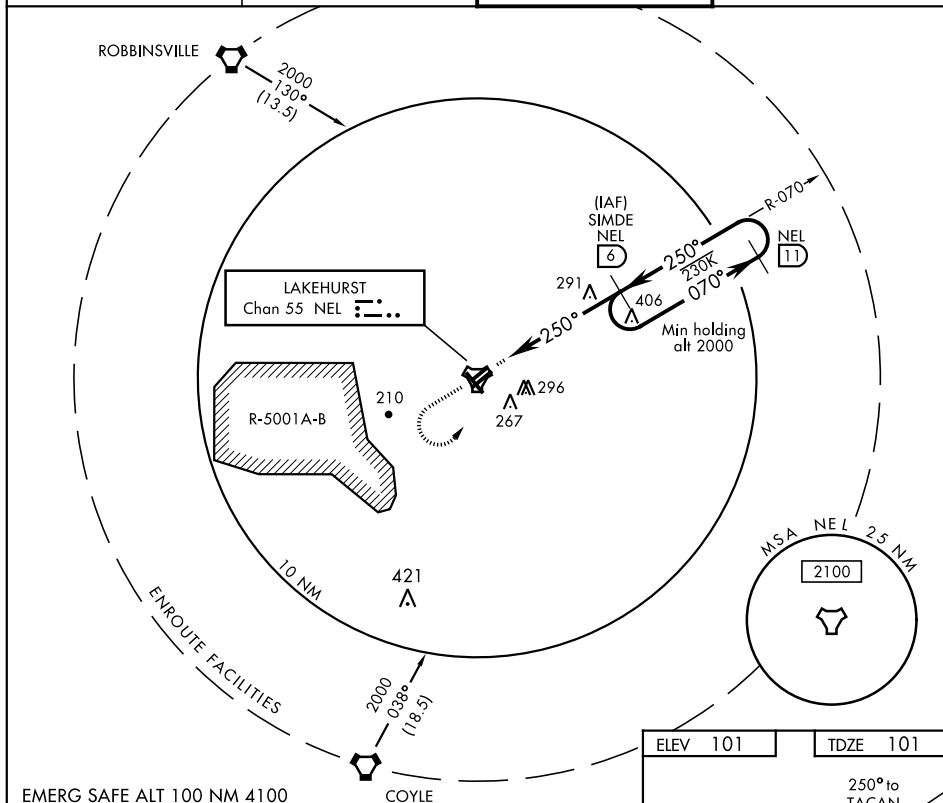
AL-223 [USN]

MALSR

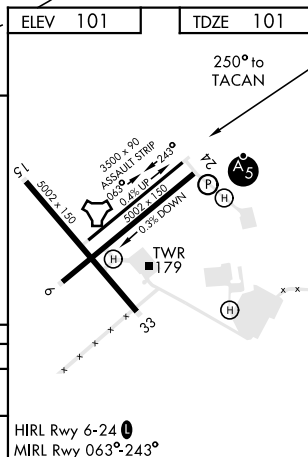


MISSED APPROACH: Climb to 800, then climbing left turn to 2000 to intercept NEL TACAN R-070 to SIMDE and hold.

<p>ATIS ★</p> <p>276.525</p>	<p>MC GUIRE APP CON</p> <p>126.475 363.8</p>	<p>LAKEHURST TOWER ★</p> <p>127.775 360.2</p>	<p>GND CON</p> <p>118.375 307.05</p>
-------------------------------------	---	--	---



CATEGORY	A	B	C	D
S-24*	520- $\frac{1}{2}$ 419 (500- $\frac{1}{2}$)		520- $\frac{3}{4}$ 419 (500- $\frac{3}{4}$)	
C CIRCLING	640-1 539 (600-1)	720-1 619 (700-1)	720-1 $\frac{3}{4}$ 619 (700-1 $\frac{3}{4}$)	720-2 619 (700-2)



LAKEHURST, NEW JERSEY

40°02'N-74°21'W

LAKEHURST MAXFIELD FLD,
(JOINT BASE MC GUIRE DIX LAKEHURST) (KNEL)

TACAN RWY 24

Amdt 2 05DEC19

NE-2, 03 DEC 2020 to 31 DEC 2020