

LAKEHURST, NEW JERSEY

VOR or VOR/DME or TACAN Y RWY 33

LAKEHURST MAXFIELD FLD,

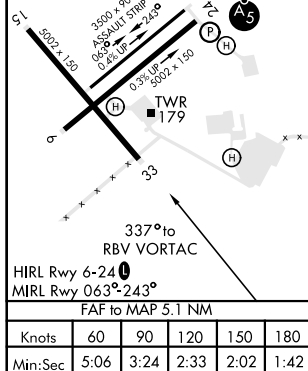
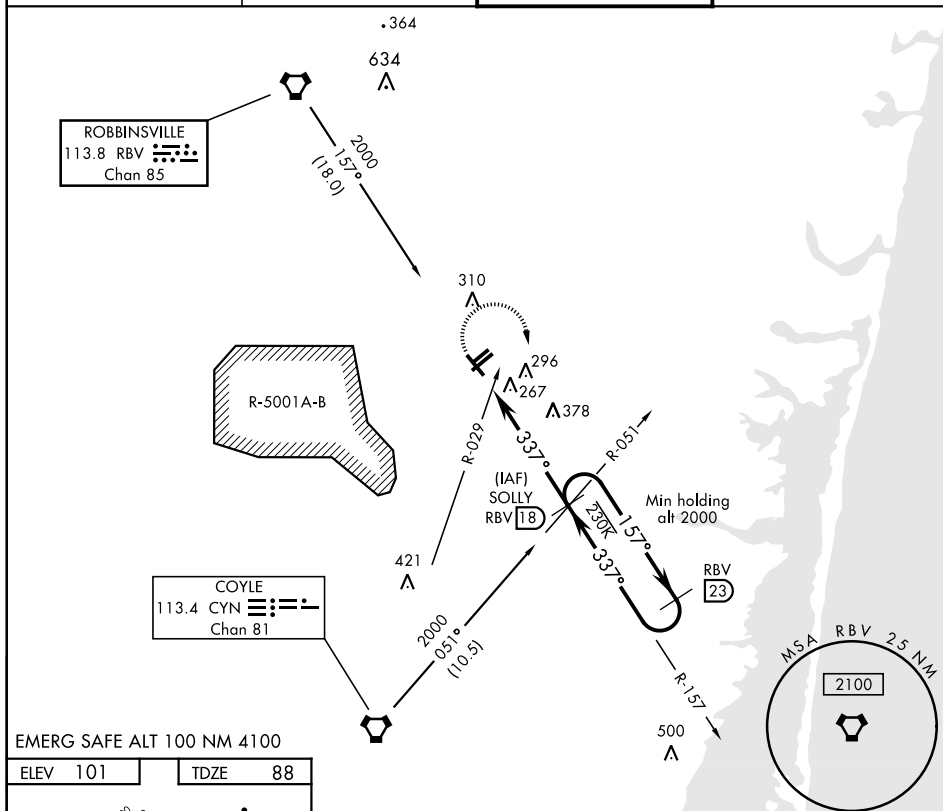
(JOINT BASE MC GUIRE DIX LAKEHURST) (KNEL)

VORTAC RBV <b>113.8</b> Chan <b>85</b>	APCH CRS <b>337°</b>	Rwy Idg TDZE Arpt Elev <b>5002</b> <b>88</b> <b>101</b>
--	-------------------------	--

AL-223 [USN]

(JOINT BASE MC GUIRE DIX LAKEHURST) (KNEL)

		MISSED APPROACH: Climbing right turn to 2000, intercept RBV VORTAC R-157 to SOLLY and hold.	
ATIS ★ <b>276.525</b>	MC GUIRE APP CON <b>126.475 363.8</b>	LAKEHURST TOWER ★ <b>127.775 360.2</b>	GND CON <b>118.375 307.05</b>



<div>2000</div> <div>RBV R-157</div>		<div>SOLLY</div> <div>RBV 18</div>		<div>SOLLY</div> <div>RBV R-157 18 /</div> <div>CYN R-051</div>		<div>RBV R-157 23</div>	
VORTAC		<div>TOBME</div> <div>RBV R-157 12.9 /</div> <div>CYN R-029</div>		<div>RBV 14</div>		<div>157°</div> <div>337°</div> <div>2000</div> <div>3.12°</div> <div>TCH 51</div>	
0.5		5.1 NM					
CATEGORY	A		B		C		D
S-33	660-1 572 (600-1)		660-1 572 (600-1)		660-1 572 (600-1)		660-1 572 (600-1)
CIRCLING	660-1 559 (600-1)		720-1 619 (700-1)		720-1 619 (700-1)		720-2 619 (700-2)

LAKEHURST, NEW JERSEY

40°02'N-74°21'W

LAKEHURST MAXFIELD FLD,

Amdt 3 30JAN20

(JOINT BASE MC GUIRE DIX LAKEHURST) (KNEL)

VOR or VOR/DME or TACAN Y RWY 33