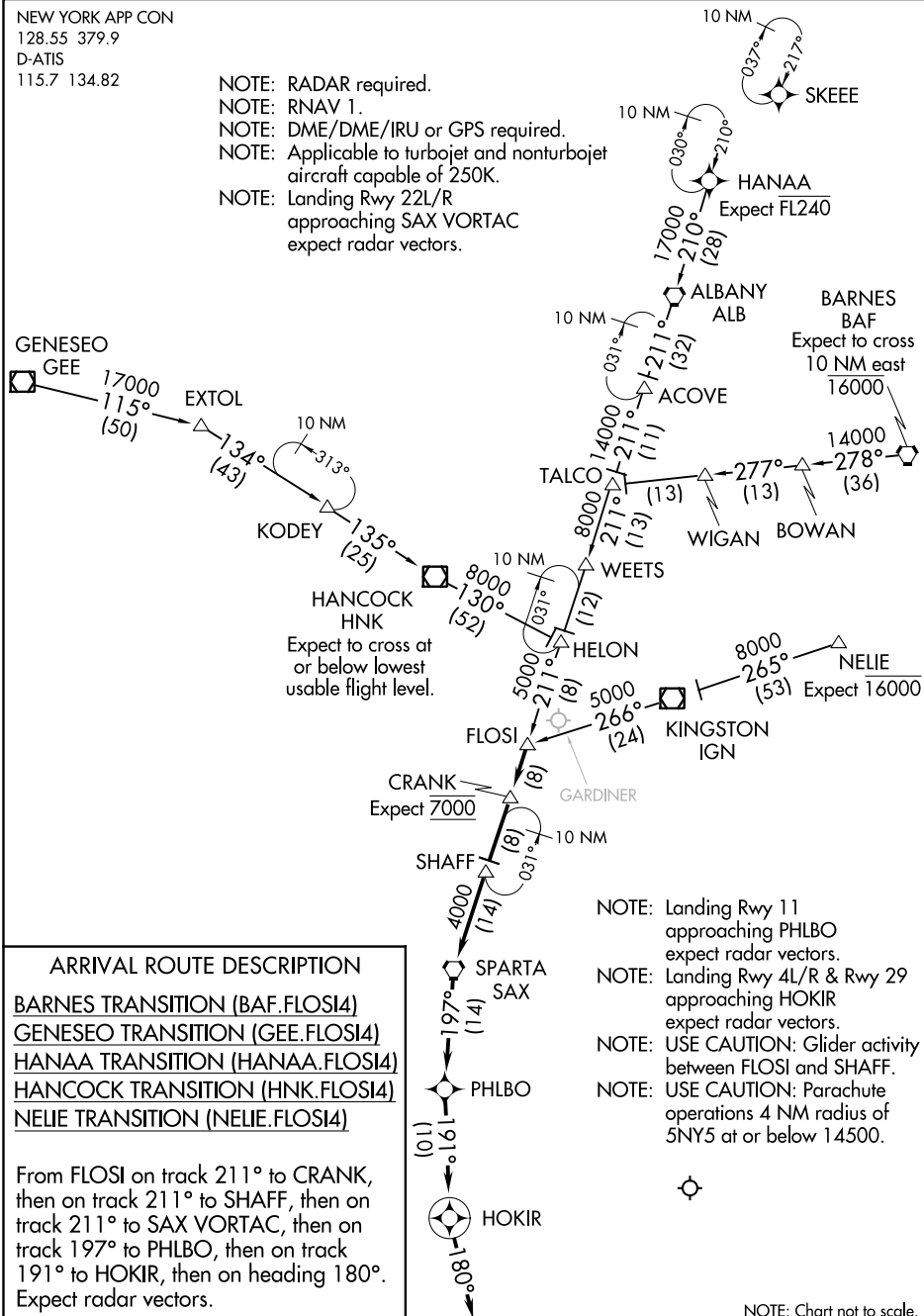


NEW YORK APP CON
128.55 379.9
D-ATIS
115.7 134.82

- NOTE: RADAR required.
NOTE: RNAV 1.
NOTE: DME/DME/IRU or GPS required.
NOTE: Applicable to turbojet and nonturbojet aircraft capable of 250K.
NOTE: Landing Rwy 22L/R
approaching SAX VORTAC
expect radar vectors.



ARRIVAL ROUTE DESCRIPTION

BARNES TRANSITION (BAF.FLOSI4)
 GENESEO TRANSITION (GEE.FLOSI4)
 HANAA TRANSITION (HANAA.FLOSI4)
 HANCOCK TRANSITION (HNK.FLOSI4)
 NELIE TRANSITION (NELIE.FLOSI4)

From FLOSI on track 211° to CRANK, then on track 211° to SHAFF, then on track 211° to SAX VORTAC, then on track 197° to PHLBO, then on track 191° to HOKIR, then on heading 180°. Expect radar vectors.

- NOTE: Landing Rwy 11
approaching PHLBO
expect radar vectors.
- NOTE: Landing Rwy 4L/R & Rwy 29
approaching HOKIR
expect radar vectors.
- NOTE: USE CAUTION: Glider activity
between FLOSI and SHAFF.
- NOTE: USE CAUTION: Parachute
operations 4 NM radius of
5NY5 at or below 14500.

NOTE: Chart not to scale.