

ILS or LOC RWY 11  
NEWARK LIBERTY INTL (EWR)

- T** When VGSI inop, Circling Rwy 29 NA at night.  
**A** DME required.

**MISSED APPROACH:** Climb to 1700 heading 107°, at TEB VOR/DME R-208 right turn to intercept TEB VOR/DME R-199 and COL VOR/DME R-019 to COL VOR/DME and hold. At COL 13 DME climb to 3000.

D-ATIS <b>115.7 134.825</b>	NEW YORK APP CON <b>128.55 379.9</b>	NEWARK TOWER <b>118.3 257.6</b>	GND CON <b>121.8</b>	CLNC DEL <b>118.85</b>	CPDLC
--------------------------------	---	------------------------------------	-------------------------	---------------------------	-------

## RADAR REQUIRED

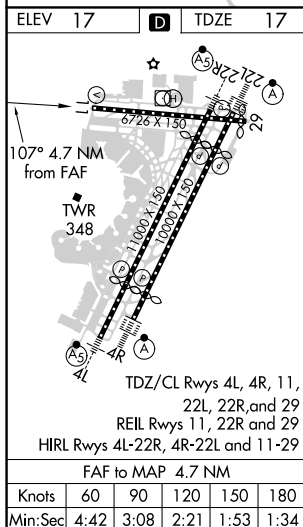
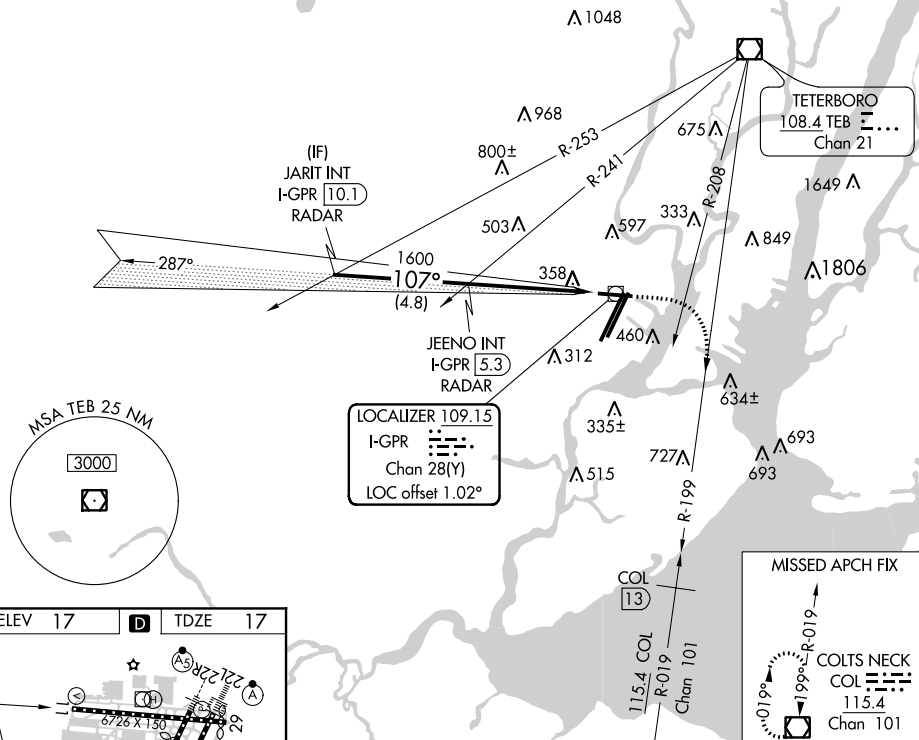


Diagram illustrating the ILS glidepath and VGSIs for JARIT INT and JEENO INT. The diagram shows the glidepath angles (107°) and the VGSIs (1700, 1600) for both stations. The glidepath for JARIT INT is 3.00° TCH 57, and for JEENO INT is 3.08° TCH 58. The VGSIs are marked at 1700 and 1600. The diagram also shows the COL (Course of Landing) for each station, which is 107° for both. The diagram also shows the VGSIs for the TEB R-199 and COL R-019, which are at 1700 and 1600. The COL for TEB R-199 is 107 degrees, and the COL for COL R-019 is 107 degrees. The diagram also shows the VGSIs for the COL 13, which is at 1700 and 1600. The COL for COL 13 is 107 degrees. The diagram also shows the VGSIs for the COL 13, which is at 1700 and 1600. The COL for COL 13 is 107 degrees. The diagram also shows the VGSIs for the COL 13, which is at 1700 and 1600. The COL for COL 13 is 107 degrees.