

LOC/DME	I-LSQ	APP CRS	Rwy Idg	22L	22R
108.7		219°	TDZE	8207 11	9560 10
Chan 24			Apt Elev	17	17

ILS or LOC RWY 22L  
NEWARK LIBERTY INTL (EWR)

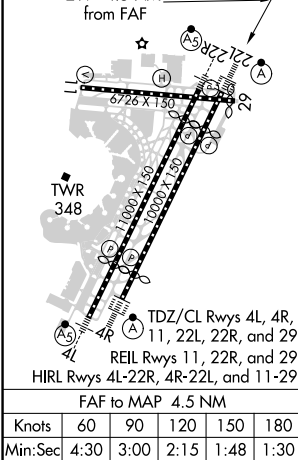
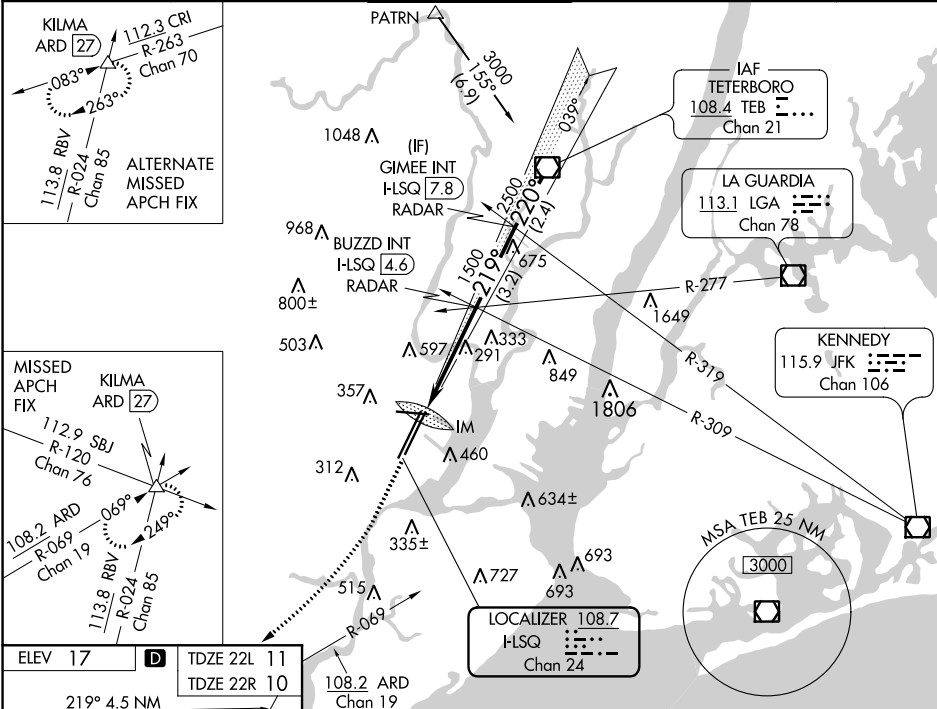
When Rwy 29 VGSi inop, Circling Rwy 29 NA at night. Inop table does not apply to SIDESTEP Rwy 22R Cats A/B.

22L ALSF-2

22R MALSR

MISSED APPROACH: Climb to 500 then dimbing right turn to 3000 on heading 225° and ARD VOR/DME R-069 to KILMA INT/ARD 27 DME and hold.

D-ATIS	NEW YORK APP CON	NEWARK TOWER	GND CON	CLNC DEL	CPDLC
115.7 134.825	128.55 379.9	118.3 257.6	121.8	118.85	



ELEV 17	TDZE 22L 11	TDZE 22R 10
219° 4.5 NM from FAF	108.2 ARD R-069 Chan 19	
500	3000	
ARD R-069	KILMA	
VGSi and ILS glidepath not coincident (VGSi Angle 3.00/TCH 60).		
BUZZD INT I-LSQ [4.6] RADAR	GIMEE INT I-LSQ [7.8] RADAR	TEB VOR/DME
I-LSQ DME ANTENNA	*I-LSQ [1.7]	3000
I-LSQ [0.2]	*LOC only.	220°
0.2	1.3 NM	3 NM
3.2 NM	2.4 NM	
CATEGORY	A	B
S-ILS 22L	211/18	200 (200-1/2)
S-LOC 22L	560/24	549 (600-1/2)
SIDESTEP Rwy 22R	560/50	550 (600-1)
760-1	820-1	900-2 3/4
743 (800-1)	803 (900-1)	883 (900-2 3/4)
900-3	883 (900-3)	

NE-2, 03 DEC 2020 to 31 DEC 2020

NE-2, 03 DEC 2020 to 31 DEC 2020