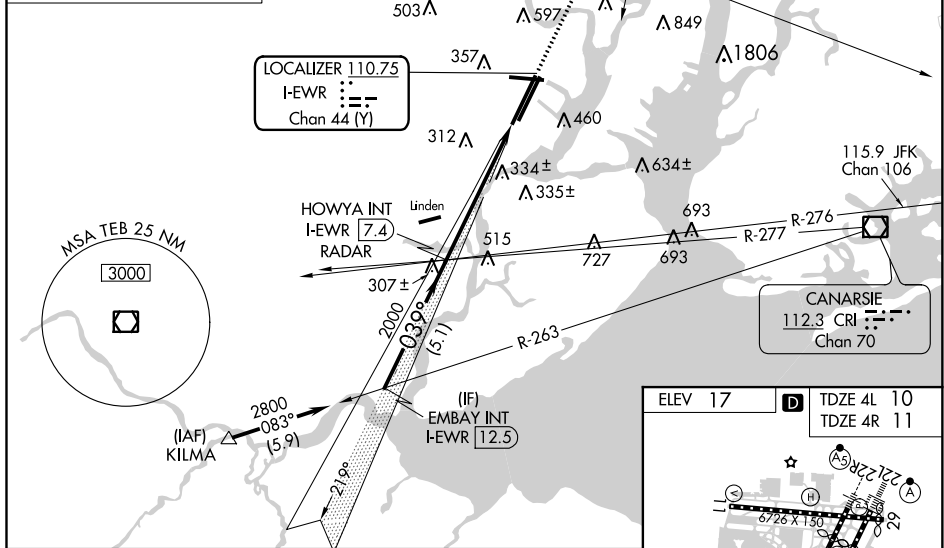


ILS or LOC RWY 4L  
NEWARK LIBERTY INTL (EWR)

**MISSED APPROACH:** Climb to 620 then climbing right turn to 2500 on heading 060° and TEB VOR/DME R-205 to TEB VOR/DME and hold.



ELEV 17

TDZE 4L 10  
TDZE 4R 11

TWR 348

039° 5.9 NM from FAF

TDZ/CL Rwy's 4L, 4R, 11, 22L, 22R, and 29

REIL Rwy's 11, 22R, and 29

HIRL Rwy's 4L-22R, 4R-22L, and 11-29

FAF to MAP 5.9 NM

Knots	60	90	120	150	180
Min:Sec	5:54	3:56	2:57	2:22	1:58

NE-2, 03 DEC 2020 to 31 DEC 2020