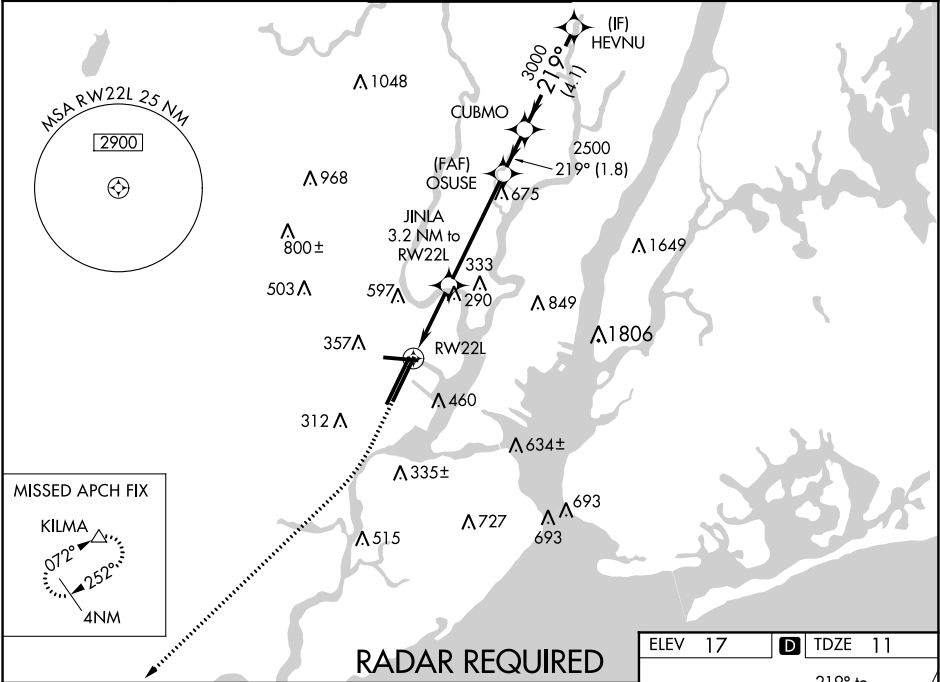


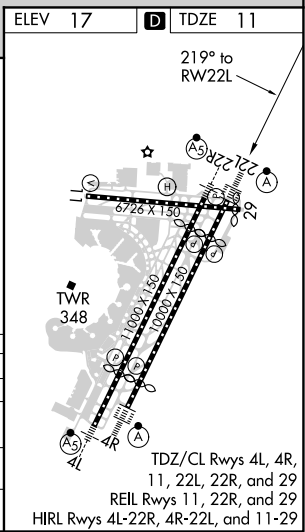
WAAS CH <b>70324</b> <b>W22A</b>	APP CRS <b>219°</b>	Rwy Idg <b>8207</b> TDZE <b>11</b> Apt Elev <b>17</b>
--	------------------------	---

RNAV (GPS) Z RWY 22L  
NEWARK LIBERTY INTL (EWR)

RNP APCH.		ALSIF-2	MISSED APPROACH: Climb to 600 then climbing right turn to 3000 direct to KILMA and hold.		
For uncompensated Baro-VNAV systems, LNAV/VNAV NA below -13°C (9°F) or above 54°C (130°F). Circling Rwy 29 NA at night. For inoperative ALSIF-2, increase LNAV/VNAV all Cats visibility to 1½ mile.					
D-ATIS <b>115.7 134.825</b>	NEW YORK APP CON <b>128.55 379.9</b>	NEWARK TOWER <b>118.3 257.6</b>	GND CON <b>121.8</b>	CLNC DEL <b>118.85</b>	CPDLC



		KILMA	VGSI and RNAV glidepath not coincident (VGSI Angle 3.00°/TCH 60°).	
*LNAV only.				
		JINLA 3.2 NM to RW22L	OSUSE 2500	CUBMO HEVNU
CATEGORY	A	B	C	D
LPV DA	211/18		200 (200-½)	
LNAV/VNAV DA	462/50		451 (500-1)	
LNAV MDA	560/24	549 (600-½)	560/60	549 (600-1¼)
CIRCLING	760-1 743 (800-1)	820-1 803 (900-1)	900-2¾ 883 (900-2¾)	900-3 883 (900-3)



RNAV (GPS) Z RWY 22L

NE-2, 03 DEC 2020 to 31 DEC 2020

NE-2, 03 DEC 2020 to 31 DEC 2020