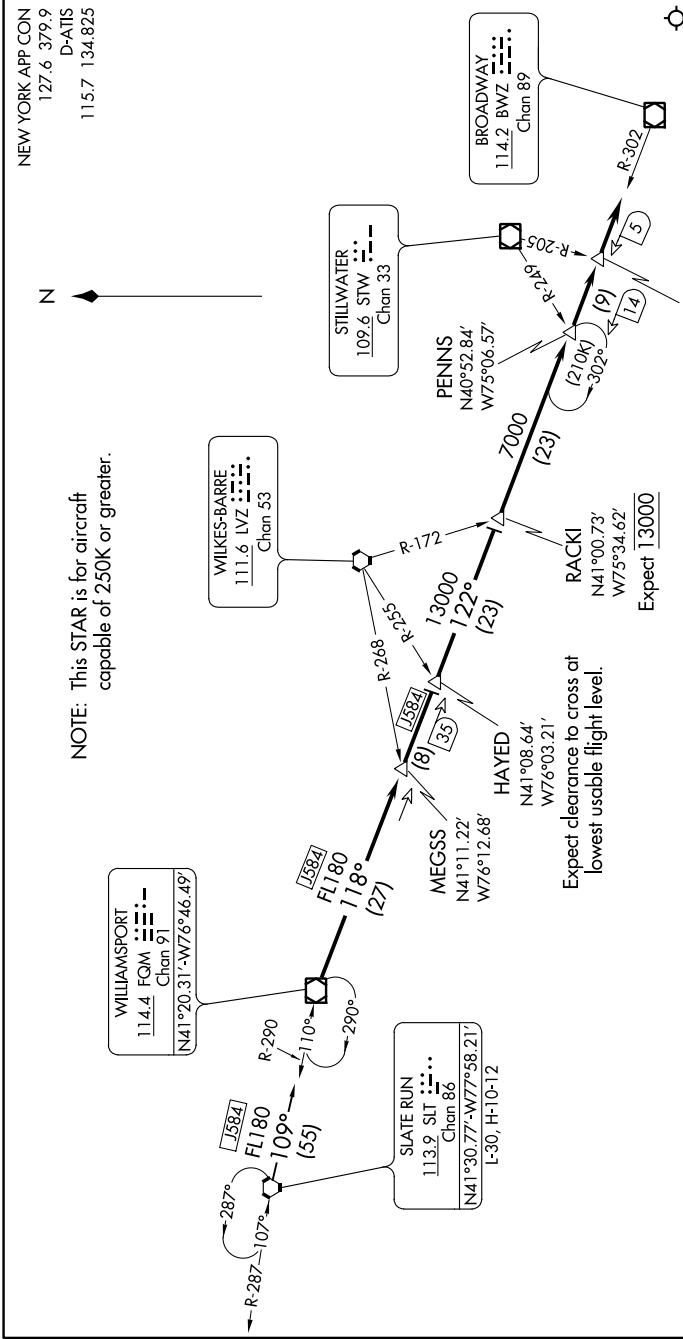


NE-2, 03 DEC 2020 to 31 DEC 2020



ARRIVAL ROUTE DESCRIPTION

SLATE RUN TRANSITION (SLT FQM3): From over SLT VORTAC on SLT R-109 to FQM VOR/DME.

From FQM VOR/DME on FQM R-118 to HAYED INT. Then on BWZ R-302 to RACK1 INT. Then on BWZ R-302 to SWEET INT. Depart SWEET heading 122°. Expect vectors to final approach course.

NOTE: Chart not to scale.