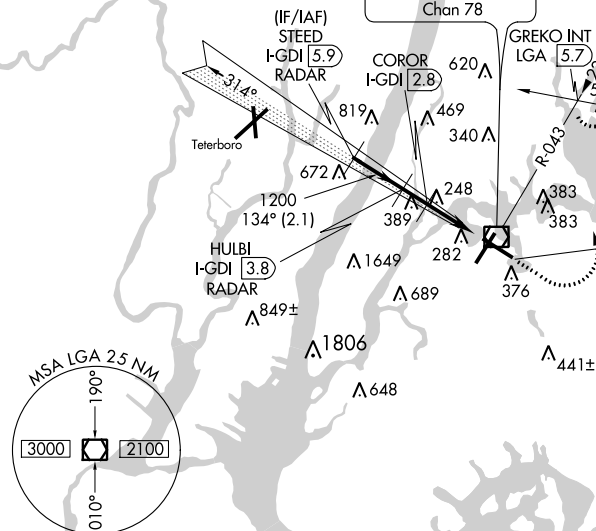


COPTER ILS or LOC RWY 13
LAGUARDIA(LGA)

MISSED APPROACH: Climb to 800 then climbing left turn to 2000 via LGA VOR/DME R-043 to GREKO INT/ LGA 5.7 DME and hold.

RADAR REQUIRED

LOCALIZER 108.5
I-GDI ≡≡·
Chan 22



Limit final and missed approach to 70 KIAS. Increase to 90 KIAS upon reaching the missed approach altitude.

ELEV 21 TDZE 12

134° 3.4 NM from FAF

7003 X 150

7003 X 150

AS

H

TW 240

TDZ/CL Rws 4, 13 and 22
HIRL Rws 4-22 and 13-31
REIL Rwy 31

FAF to MAP 3.4 NM					
Knots	45	60	75	90	105
Min:Sec	4:32	3:24	2:43	2:16	1:57