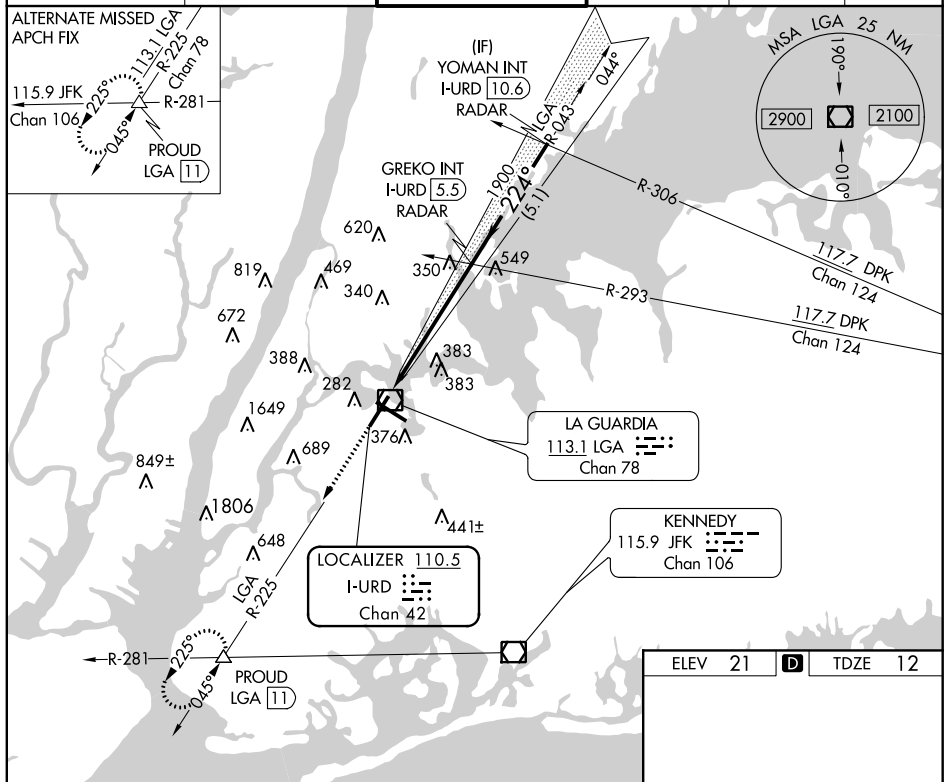


ILS RWY 22 (SA CAT I & II)
LAGUARDIA (LGA)

ALSF-1

MISSED APPROACH: Climb to 3000 on LGA VOR/DME R-225 to PROUD INT/LGA11 DME and hold, continue climb-in-hold to 3000.



3000
↑
LGA R-225

PROUD
△

VGS1 and ILS glidepath not coincident
(VGS1 Angle 3.00/TCH 67).

GREKO INT
I-URD 5.5
RADAR

YOMAN INT
I-URD 10.6
RADAR

I-URD DME
ANTENNA

1900

224°

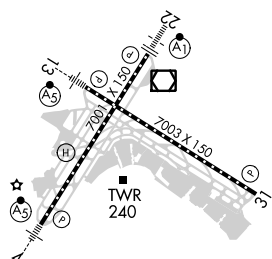
3000

GS 3.00°
TCH 52

1017' 5.7 NM 5.1 NM

CATEGORY	A	B	C	D
S-ILS 22	SA CAT I	RA 162/14	150	DA 162
S-ILS 22	SA CAT II	RA 112/12	100	DA 112

SA CATEGORY I & II ILS - SPECIAL AIRCREW
& AIRCRAFT CERTIFICATION REQUIRED



TDZ/CL Rwy 4, 13 and 22
HIRL Rwy 4-22 and 13-31
REIL Rwy 31