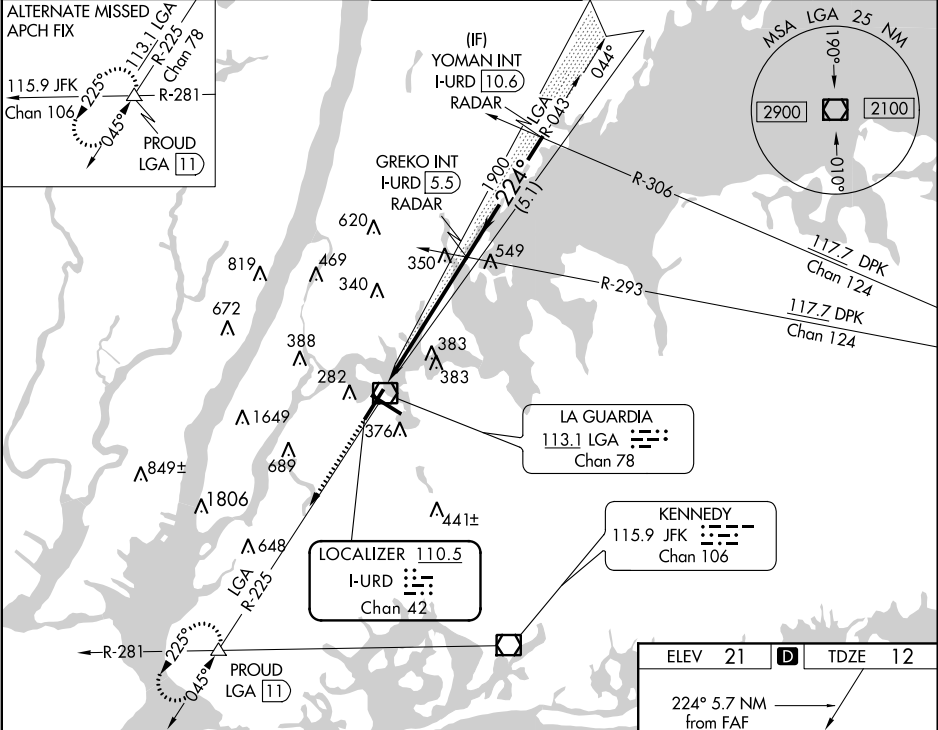


LOC/DME I-URD <b>110.5</b> Chan <b>42</b>	APP CRS <b>224°</b>	Rwy Idg <b>7001</b> TDZE <b>12</b> Apt Elev <b>21</b>	ILS or LOC RWY 22 LAGUARDIA (LGA)
---	------------------------	---	--------------------------------------

RADAR required for procedure entry. RADAR or DME required for LOC only.			ALSIF-1 	MISSED APPROACH: Climb to 3000 on LGA VOR/DME R-225 to PROUD INT/LGA 11 DME and hold, continue climb-in-hold to 3000.

D-ATIS ARR <b>125.95</b>	NEW YORK APP CON	LAGUARDIA TOWER	GND CON	CLNC DEL	CPDLC
D-ATIS DEP <b>127.05</b>	<b>120.8 263.0</b>	<b>118.7 263.0</b>	<b>121.7 263.0</b>	<b>135.2</b>	



3000

↑

LGA R-225

PROUD

△

VGSI and ILS glidepath not coincident  
(VGSI Angle 3.00/TCH 67).

\* LOC only

I-URD DME ANTENNA

I-URD 0.2

\* I-URD 1.5

↓

GREKO INT I-URD 5.5 RADAR

1900

YOMAN INT I-URD 10.6 RADAR

3000

1.6 NM

4.1 NM

5.1 NM

224°

1900

3000

GS 3.00°

TCH 52

CATEGORY	A	B	C	D
S-ILS 22	212/18 200 (200-½)			
S-LOC 22	600/24 588 (600-½)		600-1¼ 588 (600-1¼)	
CIRCLING	700-1 679 (700-1)		1080-3 1059 (1100-3)	1260-3 1239 (1300-3)

