

LOC/DME I-PZV <b>108.5</b> Chan <b>22</b>	APP CRS <b>316°</b>	Rwy Idg <b>7003</b> TDZE <b>7</b> Apt Elev <b>21</b>
---	------------------------	--

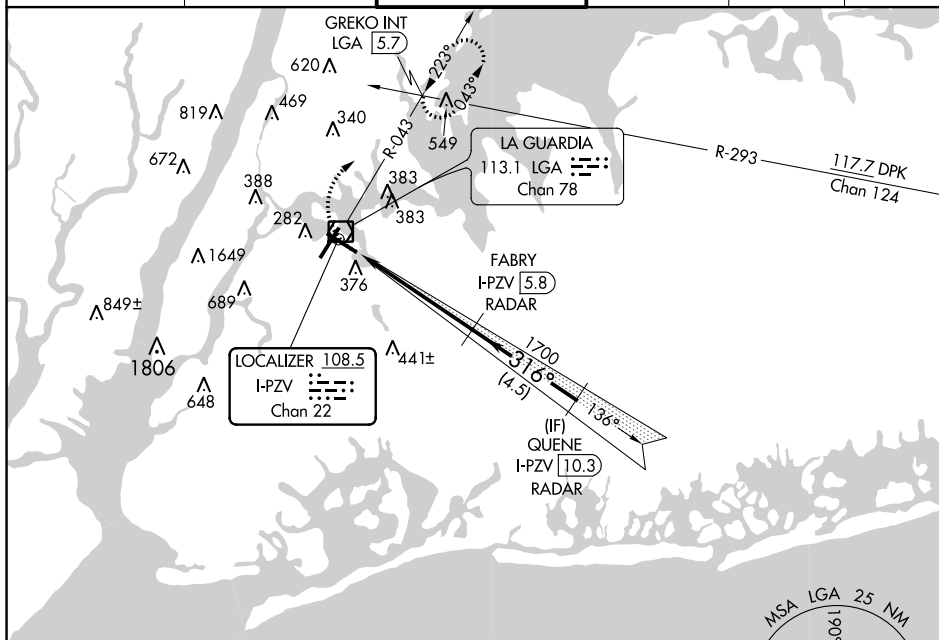
LOC RWY 31  
LAGUARDIA (LGA)

RADAR required for procedure entry. DME required.

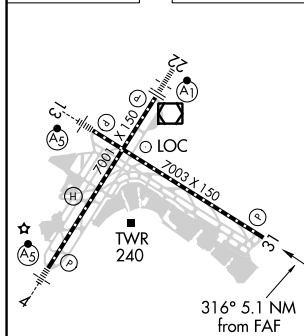
**T** Rwy 31 helicopter visibility reduction below RVR 4000 NA.

**MISSED APPROACH:** Climbing right turn to 2000 on LGA VOR/DME R-043 to GREKO INT/LGA 5.7 DME and hold, continue climb-in-hold to 2000.

D-ATIS ARR <b>125.95</b>	NEW YORK APP CON	LAGUARDIA TOWER	GND CON	CLNC DEL	CPDLC
D-ATIS DEP <b>127.05</b>	<b>120.8 263.0</b>	<b>118.7 263.0</b>	<b>121.7 263.0</b>	<b>135.2</b>	



ELEV	21	<b>D</b>	TDZE	7
------	----	----------	------	---



TDZ/CL Rwy 4, 13 and 22  
HIRL Rwy 4-22 and 13-31  
REIL Rwy 31

2000 LGA R-043	GREKO INT	VGS1 and descent angles not coincident (VGS1 Angle 3.00/TCH 71).			
CATEGORY	A	B	C	D	
S-31	600/55	593 (600-1)	600-1¾	593 (600-1¾)	
<b>C</b> CIRCLING	700-1	679 (700-1)	1080-3 1059 (1100-3)	1260-3 1239 (1300-3)	