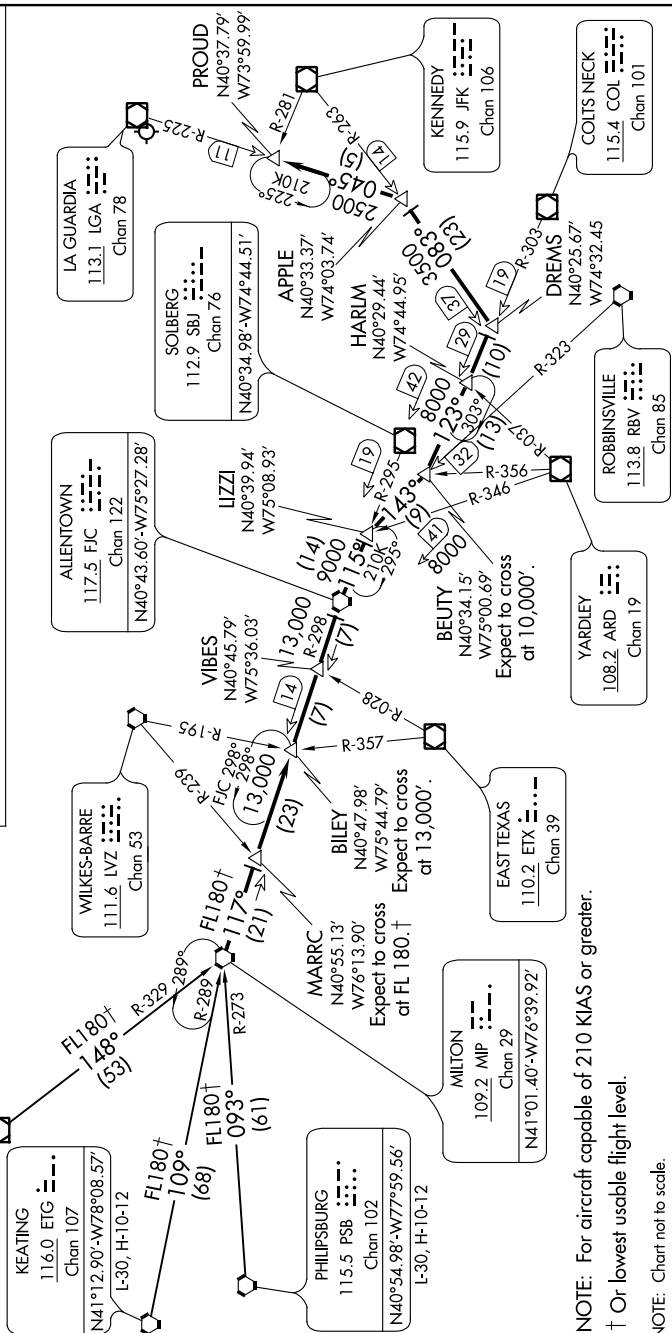


NE-2, 03 DEC 2020 to 31 DEC 2020

**KEATING TRANSITION (ETG.MIP4):**  
**PHILIPSBURG TRANSITION (PSB.MIP)**  
**STONYFORK TRANSITION (SEK.MIP)**

From over MIP VORTAC on MIP R-117 and FJC R-298 to FJC VORTAC, then on SBJ R-295 to IJZZ INT, then on RBV VORTAC R-323 to BEUTY INT, then on COL VOR/DME R-303 to HARLM INT and DREMS INT, then on JFK VOR/DME R-263 to APPLE INT, then on LGA VOR/DME R-225 to PROUD INT. Expect radar vectors to final approach course.



NOTE: For aircraft capable of 210 KIAS or greater.

† Or lowest usable flight level.

NOTE: Chart not to scale.

NE-2, 03 DEC 2020 to 31 DEC 2020

MILTON FOUR ARRIVAL  
(MIP.MIP4) 20OCT11

NEW YORK, NEW YORK  
LAGUARDIA (LGA)