

WAAS CH <b>48928</b> <b>W31A</b>	APP CRS <b>314°</b>	Rwy Idg <b>7003</b> TDZE <b>7</b> Apt Elev <b>21</b>
--	------------------------	--

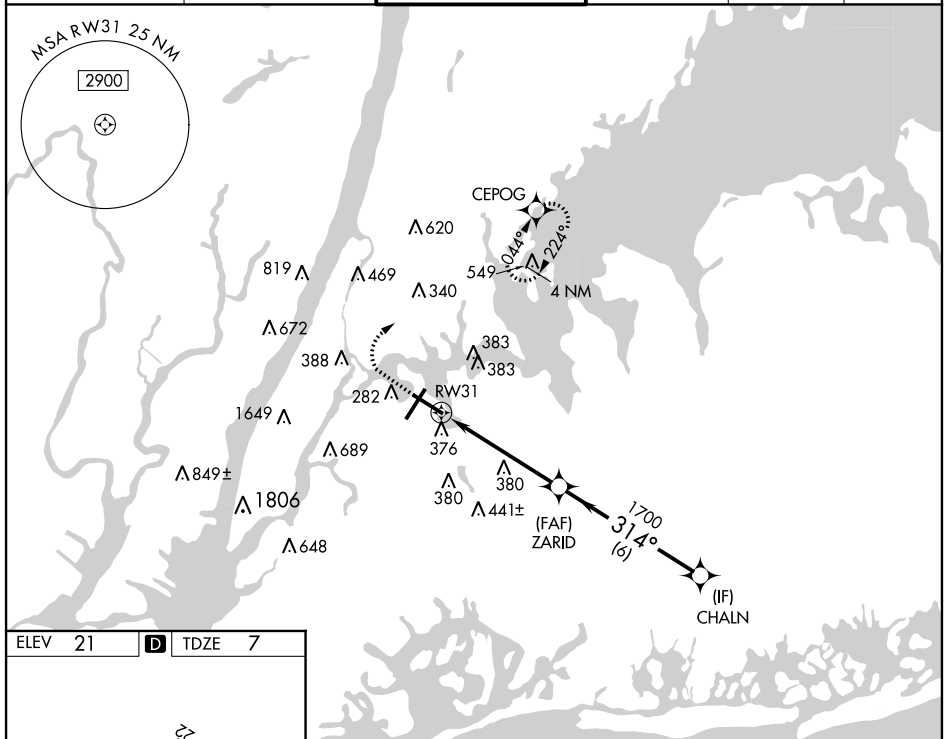
RNAV (GPS) Z RWY 31  
LAGUARDIA (LGA)

RNP APCH.

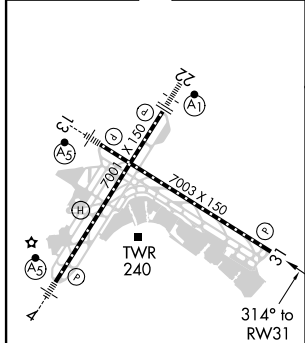
**T** Helicopter visibility reduction below 1 SM NA. For uncompensated Baro-VNAV systems, LNAV/VNAV NA below -12°C or above 48°C. Circling NA for Cat D northwest of Rwy 4 and southwest of Rwy 13.

**MISSED APPROACH:** (Do not exceed 220K until CEPOG) Climb to 700 then climbing right turn to 2000 direct CEPOG and hold.

D-ATIS ARR	<b>125.95</b>	NEW YORK APP CON		LAGUARDIA TOWER		GND CON		CLNC DEL		CPDLC
D-ATIS DEP	<b>127.05</b>	<b>120.8 263.0</b>		<b>118.7 263.0</b>		<b>121.7 263.0</b>		<b>135.2</b>		



ELEV 21	<b>D</b>	TDZE 7
---------	----------	--------



TDZ/CL Rwy 4, 13 and 22  
HIRL Rwy 4-22 and 13-31  
REIL Rwy 31

700 ↑	2000 ↗	CEPOG ✦	VGSI and RNAV glidepath not coincident (VGSI Angle 3.00/TCH 71).		CHAIN
CATEGORY	A		B	C	D
LPV DA	330/50		323 (400-1)		
LNAV/ VNAV	618-1 $\frac{3}{4}$		611 (600-1 $\frac{3}{4}$ )		
LNAV MDA	640/55	633 (700-1)		640-1 $\frac{3}{4}$	633 (700-1 $\frac{3}{4}$ )
<b>C</b> CIRCLING	700-1 679 (700-1)		1080-3 1059 (1100-3)		1260-3 1239 (1300-3)