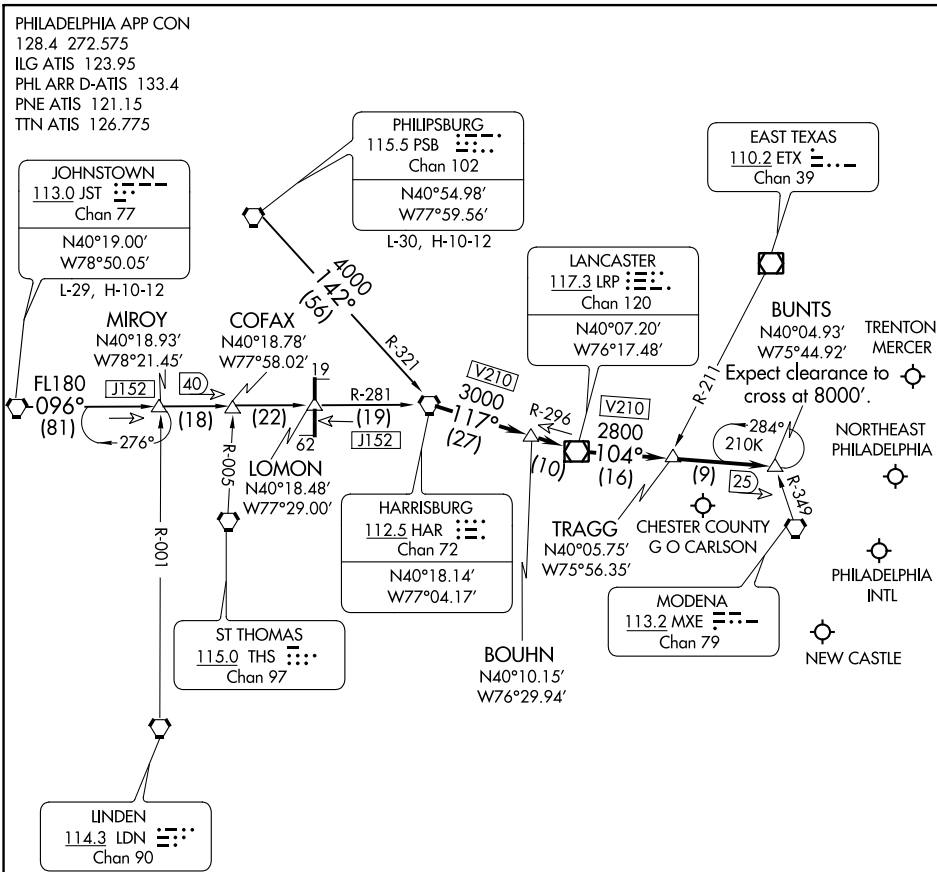


(HAR.BUNTS2) 20310
BUNTS TWO ARRIVAL

AL-320 (FAA)

PHILADELPHIA, PENNSYLVANIA



NOTE: This STAR is for aircraft capable of 250K or greater.

NOTE: Chart not to scale.

JOHNSTOWN TRANSITION (JST.BUNTS2):

PHILIPSBURG TRANSITION (PSB.BUNTS2):

From over HAR VORTAC via HAR R-117 (V210) and LRP R-296 to LRP VOR/DME, thence via LRP R-104 (V210) to BUNTS INT. Expect RADAR vectors to final approach course.

BUNTS TWO ARRIVAL
(HAR.BUNTS2) 15SEP16

PHILADELPHIA, PENNSYLVANIA

NE-4, 03 DEC 2020 to 31 DEC 2020

NE-4, 03 DEC 2020 to 31 DEC 2020