

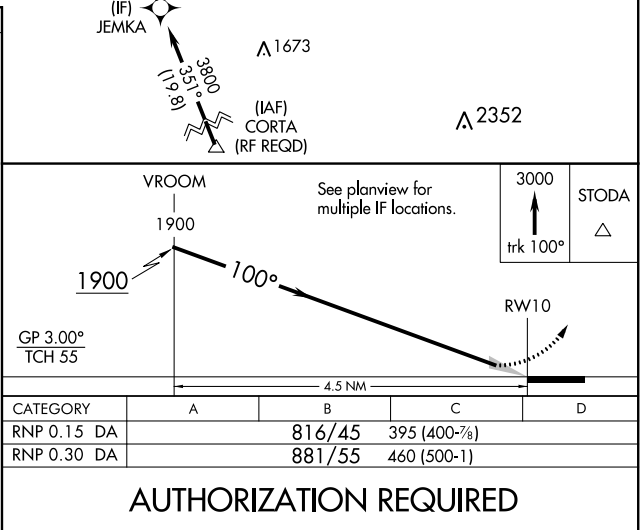
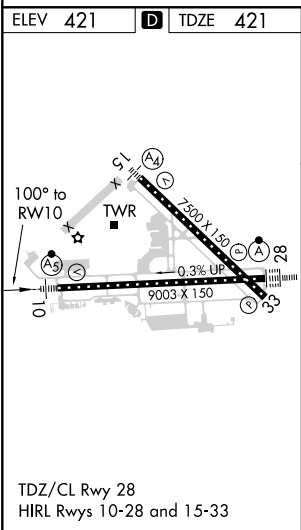
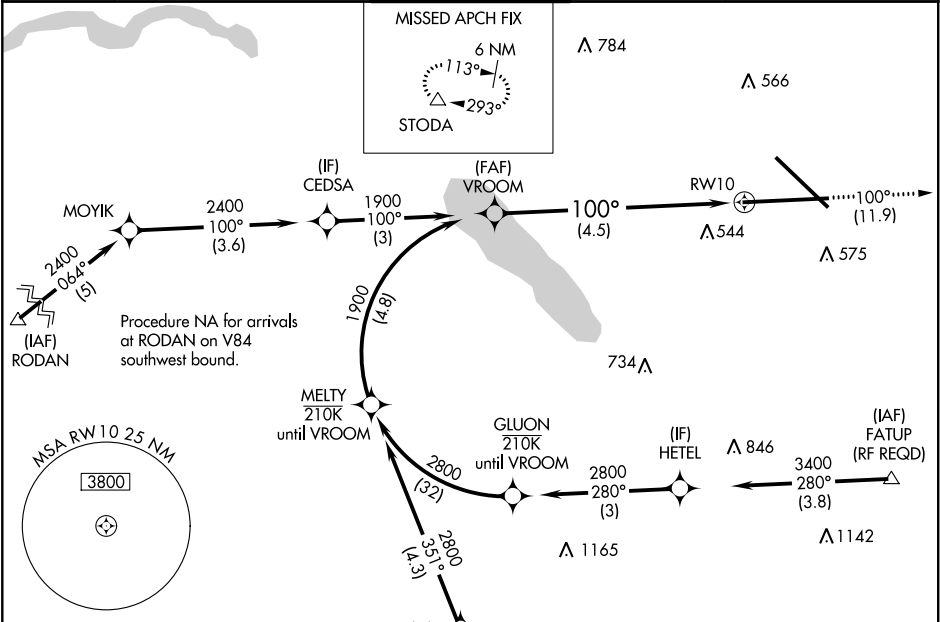
APP CRS	Rwy Idg	9003
100°	TDZE	421
	Apt Elev	421

RNAV (RNP) Y RWY 10

SYRACUSE HANCOCK INTL (SYR)

RNP AR APCH.	MALSR	MISSED APPROACH:
For uncompensated Baro-VNAV systems, procedure NA below -18°C or above 54°C. For inop ALS, increase RNP 0.15 all Cats visibility to 1½. For inop ALS, increase RNP 0.30 all Cats visibility to 1¾.		Climb to 3000 on track 100° to STODA and hold.

ATIS	SYRACUSE APP CON	SYRACUSE TOWER	GND CON	CLNC DEL
124.225	126.125 269.125	120.3 239.0	121.7 348.6	125.05 257.775



NE-2, 03 DEC 2020 to 31 DEC 2020

NE-2, 03 DEC 2020 to 31 DEC 2020