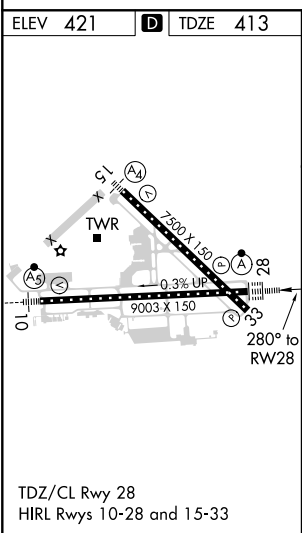
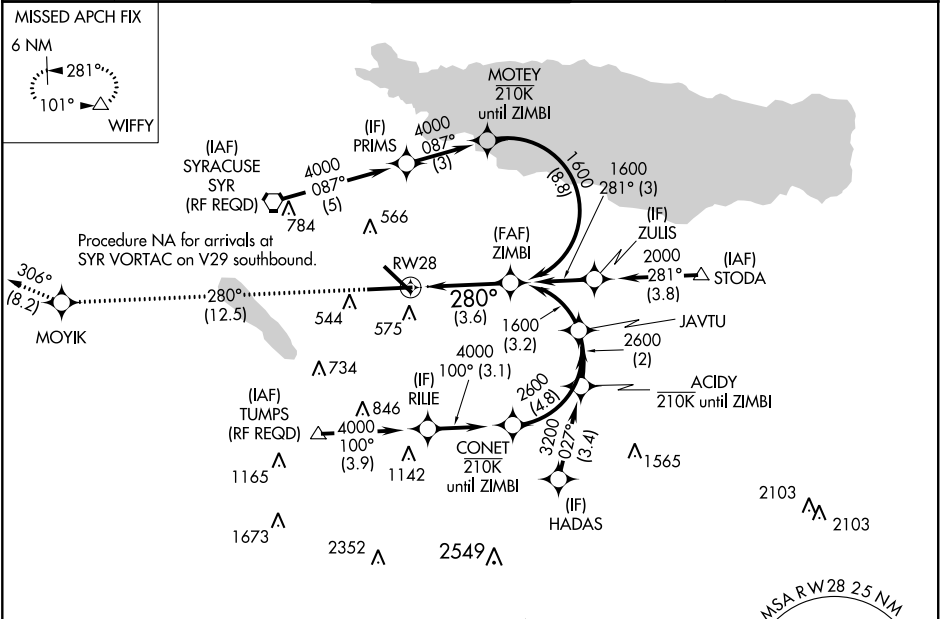


APP CRS	Rwy Idg	9003
280°	TDZE	413
	Apt Elev	421

RNAV (RNP) Y RWY 28
SYRACUSE HANCOCK INTL (SYR)

RNP AR APCH. ▼ For uncompensated Baro-VNAV systems, procedure NA below -18°C or above 54°C. For inop ALS, increase RNP 0.15 all Cats visibility to 1½. For inop ALS, increase RNP 0.30 all Cats visibility to 1½.	ALSF-2 ⬢ MISSED APPROACH: Climb to 3000 on track 280° to MOYIK and on track 306° to WIFFY and hold.
--	---

ATIS 124.225	SYRACUSE APP CON 126.125 269.125	SYRACUSE TOWER 120.3 239.0	GND CON 121.7 348.6	CLNC DEL 125.05 257.775
-----------------	-------------------------------------	-------------------------------	------------------------	----------------------------



3000 tr 280°	MOYIK ⬢	WIFFY tr 306° △	See planview for multiple IF locations.	ZIMBI 1600
RW28 280° 1600 GP 3.00° TCH 60				
3.6 NM				
CATEGORY	A	B	C	D
RNP 0.15 DA		862/55	449 (500-1)	
RNP 0.30 DA		957-1½	544 (600-1½)	
AUTHORIZATION REQUIRED				

NE-2, 03 DEC 2020 to 31 DEC 2020

NE-2, 03 DEC 2020 to 31 DEC 2020