

LOC I-SWF 110.1	APP CRS 092°	Rwy Idg TDZE Apt Elev	8817 482 491
---------------------------	------------------------	-----------------------------	---

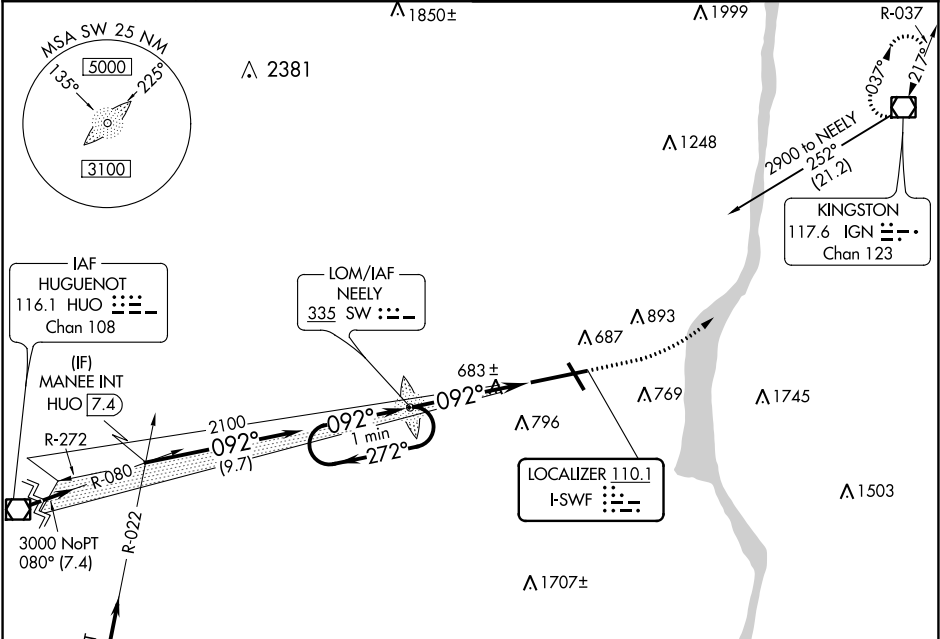
ILS or LOC RWY 9
NEW YORK STEWART INTL (SWF')

⚠

ALSF-2

MISSED APPROACH: Climb to 1200 then climbing left turn to 3000 direct IGN VOR/DME and hold.

ATIS 124.575	NEW YORK APP CON 132.75 363.1	STEWART TOWER 121.0 254.4	GND CON 121.9
------------------------	---	-------------------------------------	-------------------------



ELEV 491 TDZE 482

One Minute Holding Pattern

SW LOM

1200 3000 IGN

2300 272° 092° 2100

2096

VGSI and ILS glidepath not coincident (VGSI Angle 3.00/TCH 65).

4.8 NM

665 A 559 91 TWR 593

546± 540±

0.4% DOWN

092° 4.8 NM from FAF

CATEGORY	A	B	C	D
S-ILS 9	682/18 200 (200-½)			
S-LOC 9	940/24 458 (500-½)		940/50 458 (500-1)	
CIRCLING	1200-1 709 (800-1)		1200-2 709 (800-2)	1200-2¼ 709 (800-2¼)

TDZ/CL Rwy 9

HIRL Rwy 9-27 and 16-34

REIL Rwy 16, 27 and 34

FAF to MAP 4.8 NM

Knots	60	90	120	150	180
Min:Sec	4:48	3:12	2:24	1:55	1:36

NE-2, 03 DEC 2020 to 31 DEC 2020

NE-2, 03 DEC 2020 to 31 DEC 2020